

# **TRST-A10/TRST-A15 Printer Driver for Windows 7 User's Manual**

First Edition : 1 December 2010

**TOSHIBA TEC SINGAPORE PTE LTD**

Copyright(C)2010

TOSHIBA TEC SINGAPORE PTE LTD

This document describes the precautions for using the TRST-A10/TRST-A15 Printer Driver for Windows 7.

This document assumes that the reader is familiar with the following:

- General characteristics of Windows and Printer Driver for Windows.
- General characteristics of TRST-A10/TRST-A15 printer

Notes:

- All rights reserved. It is prohibited to use or duplicate a part or whole of this document without the permission of TOSHIBA TEC SINGAPORE PTE LTD.
  - This document is subject to change without prior notice.
- 
- \* Microsoft, Windows, Windows 2000, Windows XP and Windows 7 are registered trademarks of Microsoft Corporation in the United States and/or other countries.
  - \* The official name of Windows is the “Microsoft Windows Operating System” .

## **Revision Record**

No.SPAA-346

TRST-A10/TRST-A15 – Printer Driver for Windows 7 User's Manual

Rev.No.	Date	Pages	Description
01	1 Dec 2010	---	Original issue

## **Table of Contents**

<b>1</b>	<b>Operation Environment .....</b>	<b>5</b>
<b>2</b>	<b>How to install the Printer Driver .....</b>	<b>6</b>
2.1	Install by plug and play (Available on USB I/F and Parallel I/F) .....	6
2.2	Manual Install through "Add Printer" wizard (Serial I/F) .....	6
2.2.1	Add Printer .....	6
2.3	Manual Install through "Add Printer" wizard (LAN) .....	12
2.3.1	Add Printer .....	12
<b>3</b>	<b>How to update the Printer Driver .....</b>	<b>20</b>
3.1	Update Driver .....	20
<b>4</b>	<b>How to uninstall the Printer Driver .....</b>	<b>24</b>
4.1	Uninstall Printer Driver for Windows 7 .....	24
<b>5</b>	<b>Examples for a receipt printing .....</b>	<b>28</b>
5.1	Receipt Printing (Single side printing) .....	28
5.1.1	Printer model setting .....	29
5.1.2	Document setting .....	30
5.1.3	Logo setting .....	31
5.1.4	Font setting .....	32
5.1.5	Barcode setting .....	33
5.1.6	ControlA Font setting .....	34
5.2	Receipt Printing (Dual side printing with Single Side Command) .....	35
5.3	Receipt Printing (Dual side printing with Double Side Command) .....	36
5.4	Receipt Printing (Dual side printing with Pre-Defined data) .....	37
5.4.1	Printer model setting .....	38
5.4.2	Document setting .....	39
5.5	Print Rendering .....	42
<b>6</b>	<b>Note .....</b>	<b>43</b>
6.1	Log file setting .....	43
6.2	Restrictions .....	43

# 1 Operation Environment

This printer driver works with below environment.

OS	Windows 7 Professional, Windows 7 Ultimate
I/F	Serial(RS232C), USB, Parallel, LAN(Ethernet)

## 2 How to install the Printer Driver

### 2.1 Install by plug and play (Available on USB I/F and Parallel I/F)

When you connect the printer to the computer, Windows 7 will not display the Hardware Wizard.  
You need to manually install the driver as shown in the next section.

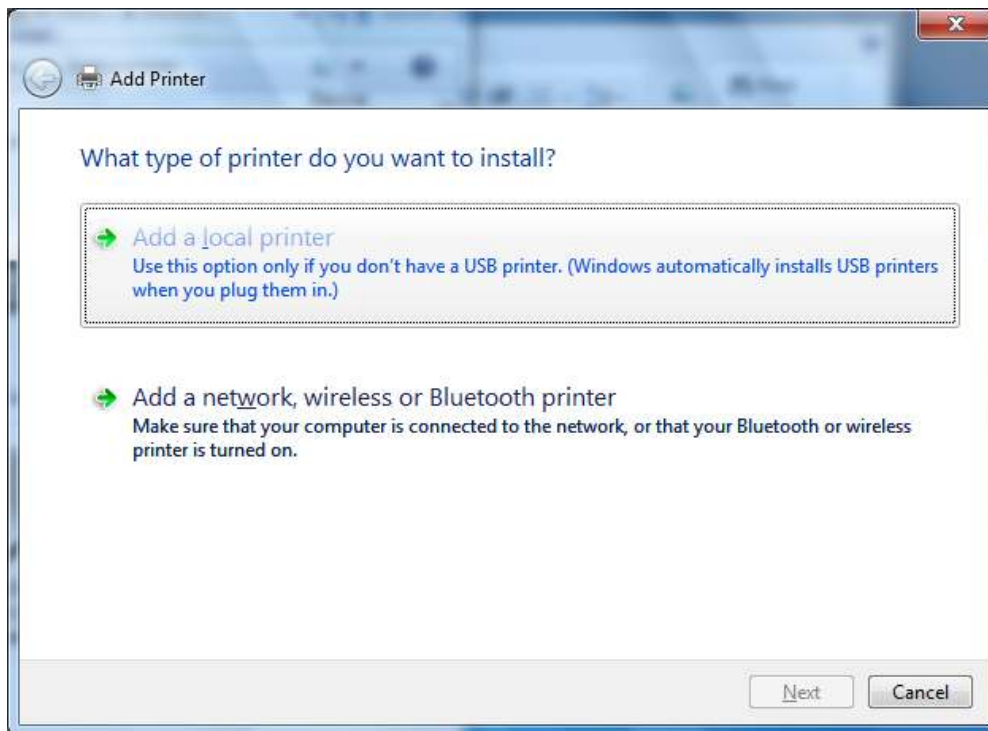
### 2.2 Manual Install through "Add Printer" wizard (Serial I/F)

#### 2.2.1 Add Printer

Run "Add Printer" wizard from the "Devices and Printer" folder.

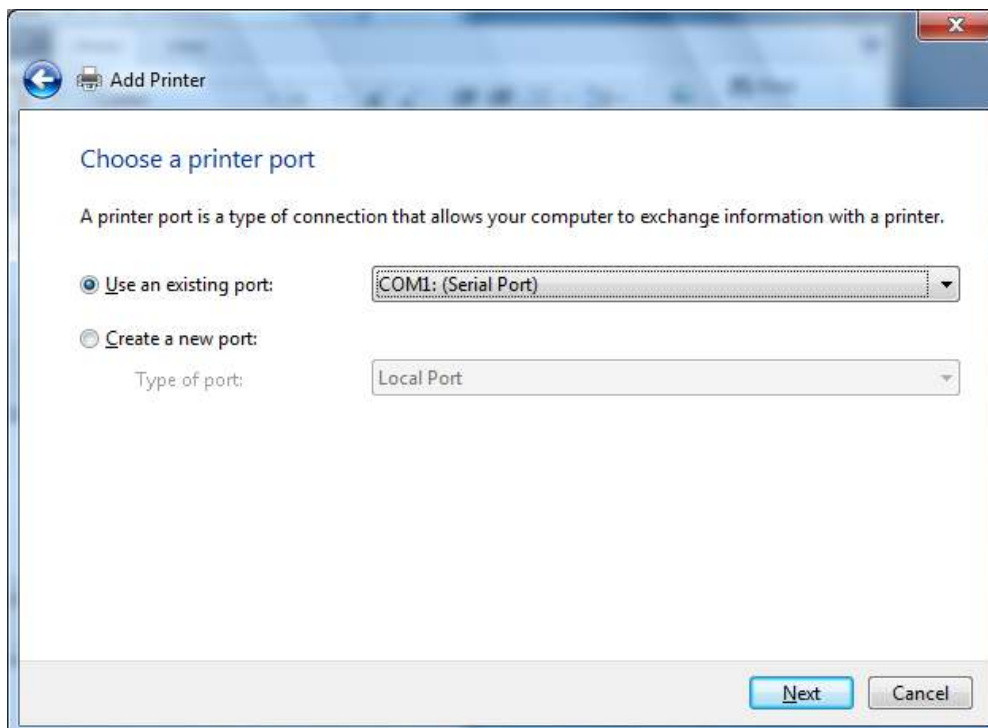


Click "Add a local printer" on the next screen.

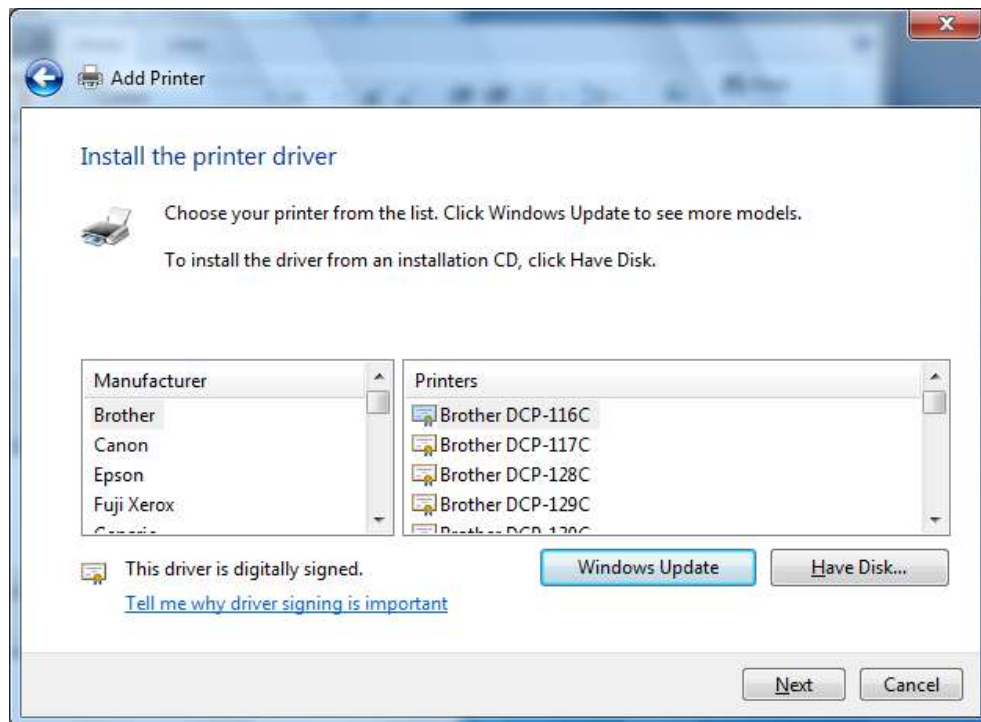


Select the port (I/F) you want to use and click "Next".

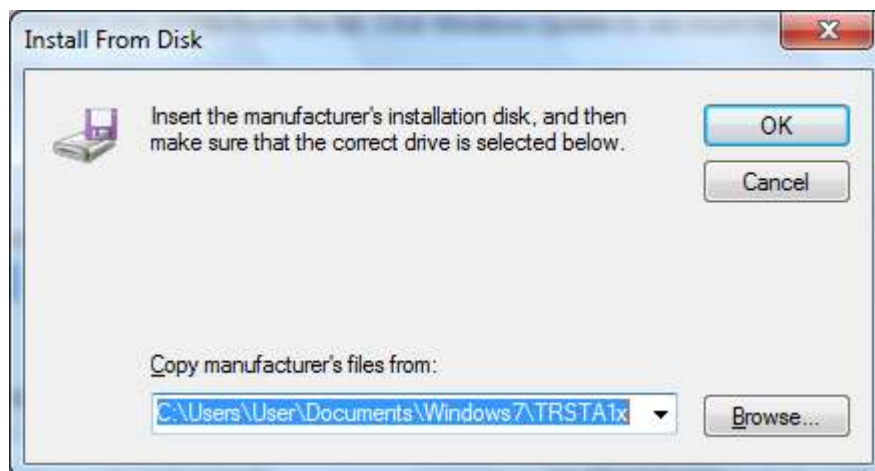
Below is the example for selecting "COM1" of Serial I/F.



Click "Have Disk..." on below screen.

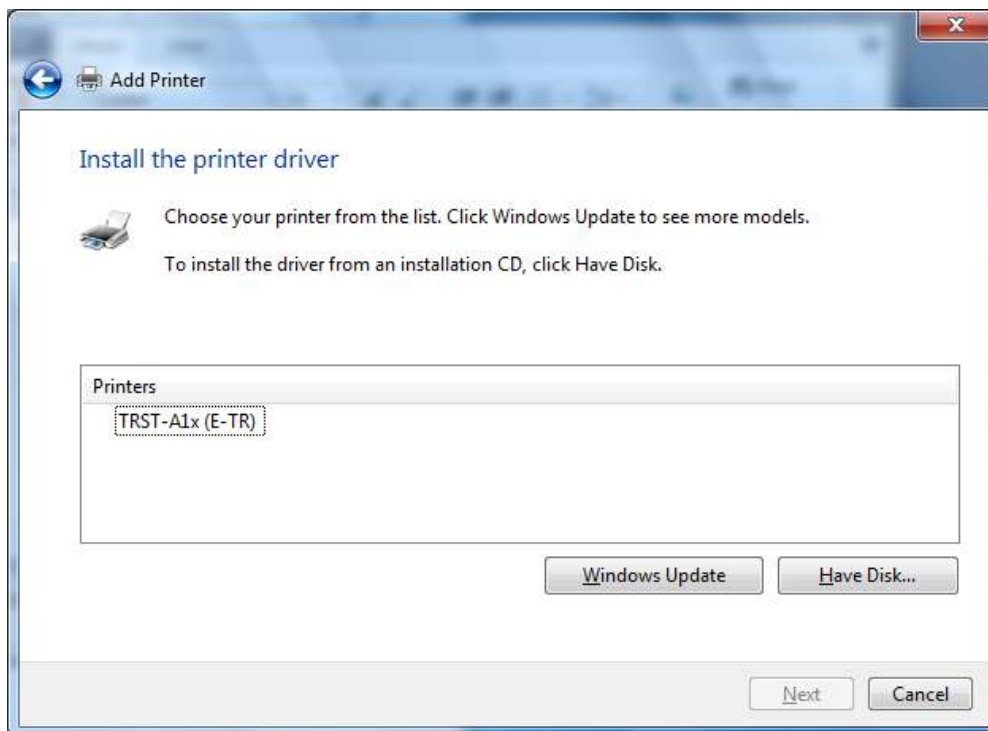


Specify the folder where the printer driver is saved. Click "OK".

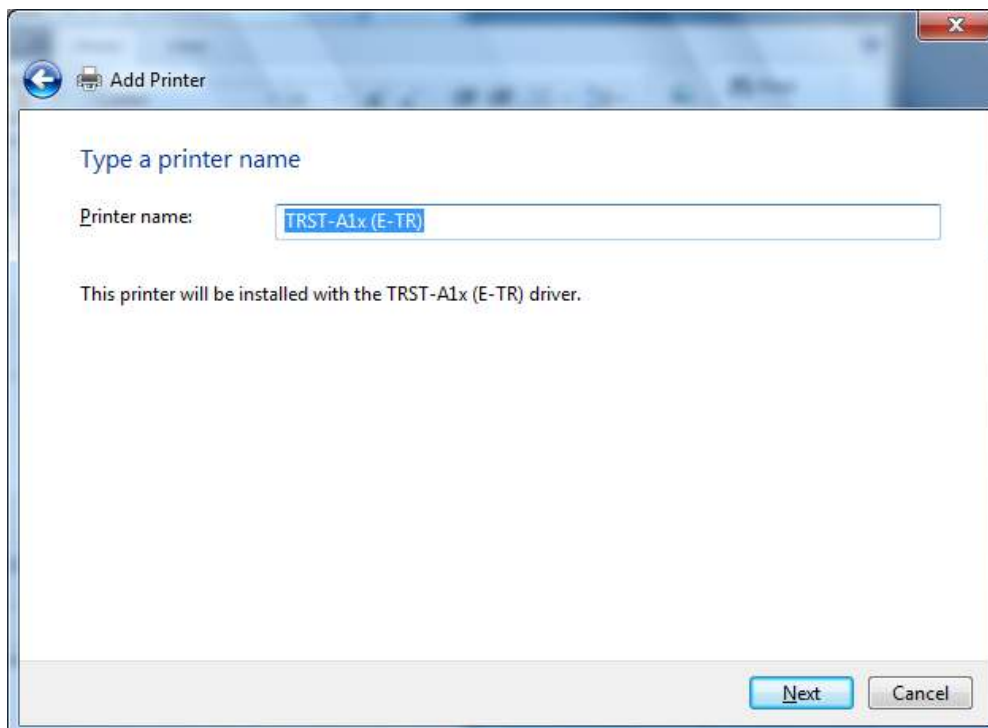




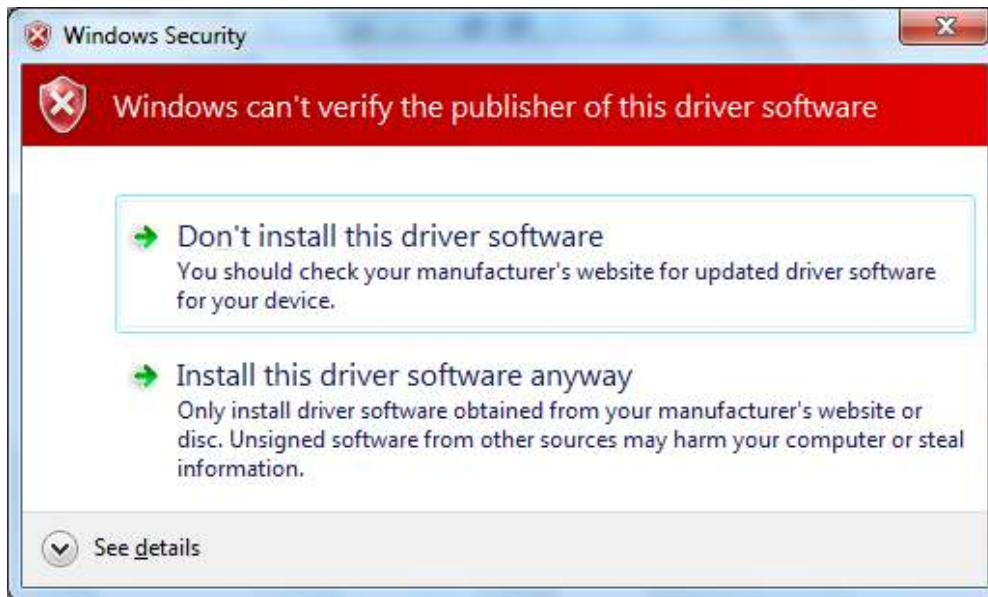
Select the "TRST-A1x (E-TR)" then click "Next" on below screen.



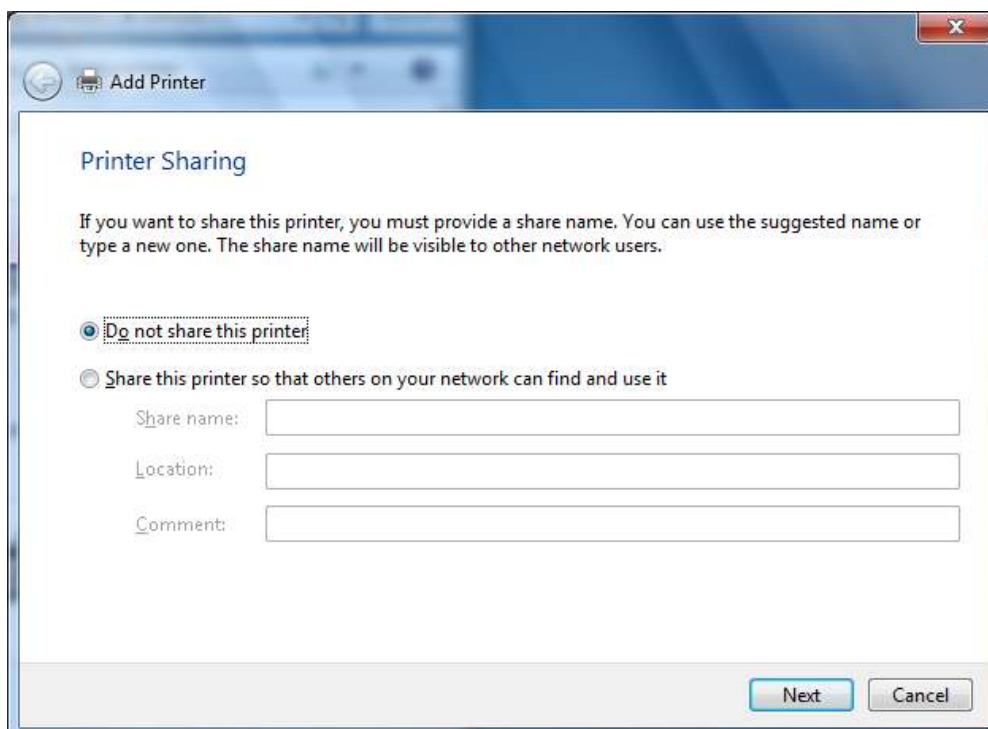
Supply a name for this printer, which you want to use. And if you want to use the printer as the default printer, click "Yes". Click "Next >" to continue the installation.



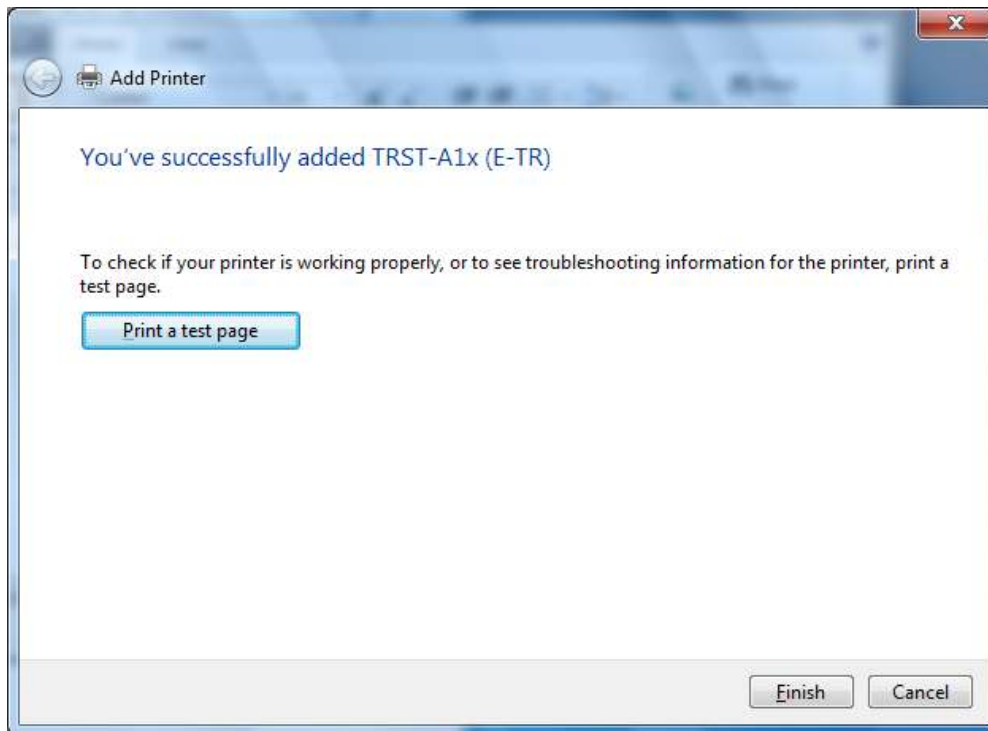
If the next screen appears, press "Install this driver software anyway".



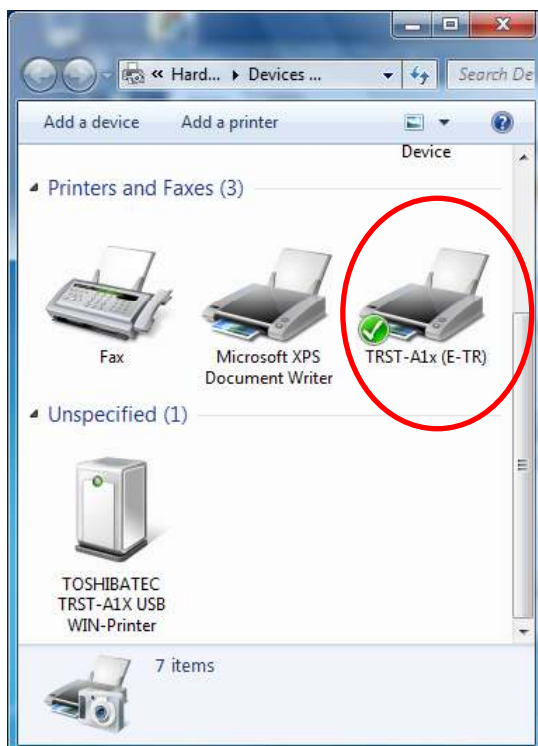
Select "Do not share this printer" and click "Next".



If you want to print a test page, click "Print a test page". Click "Finish" to complete the installation.



After installation finished, you will see the "TRST-A1x (E-TR)" icon in the "Devices and Printers" folder.



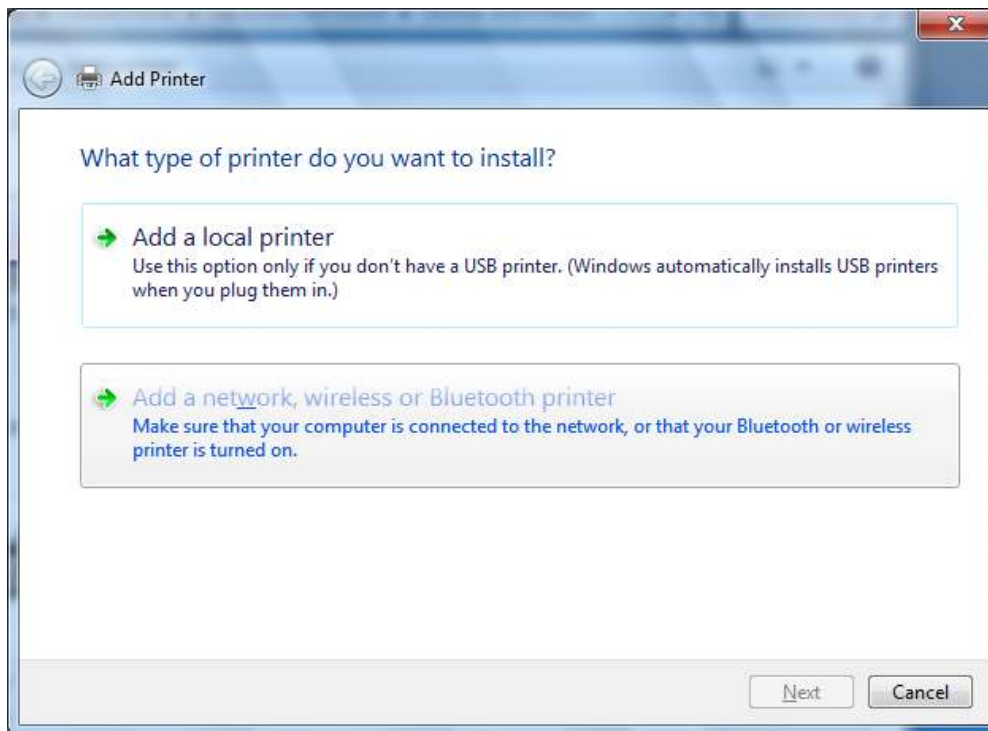
## 2.3 Manual Install through "Add Printer" wizard (LAN)

### 2.3.1 Add Printer

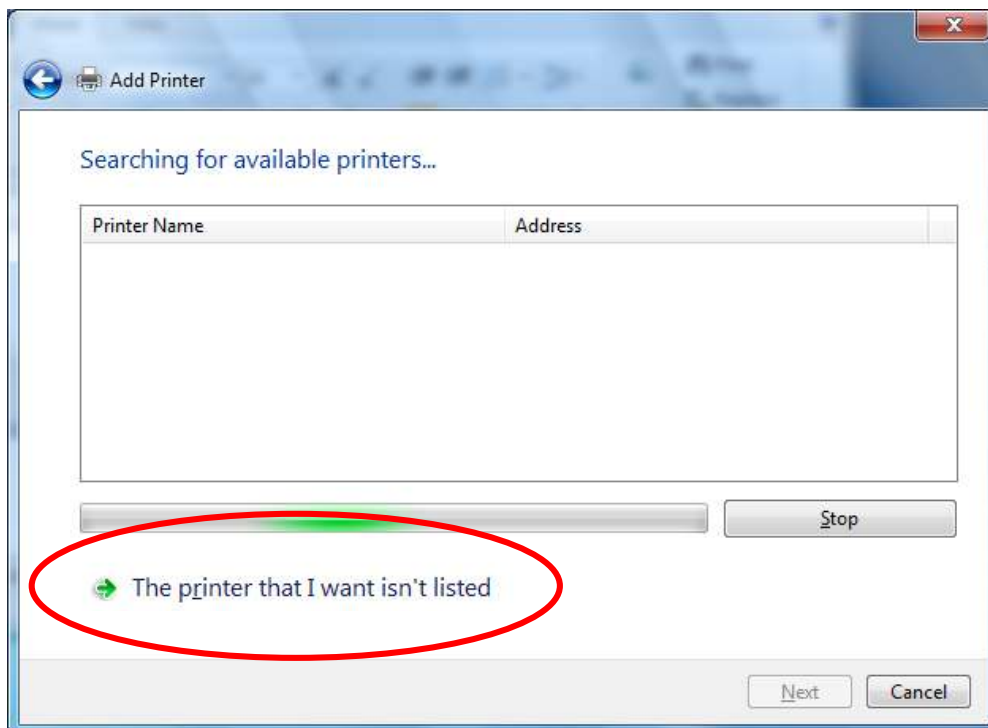
Run "Add Printer" wizard through the "Devices and Printers" folder.



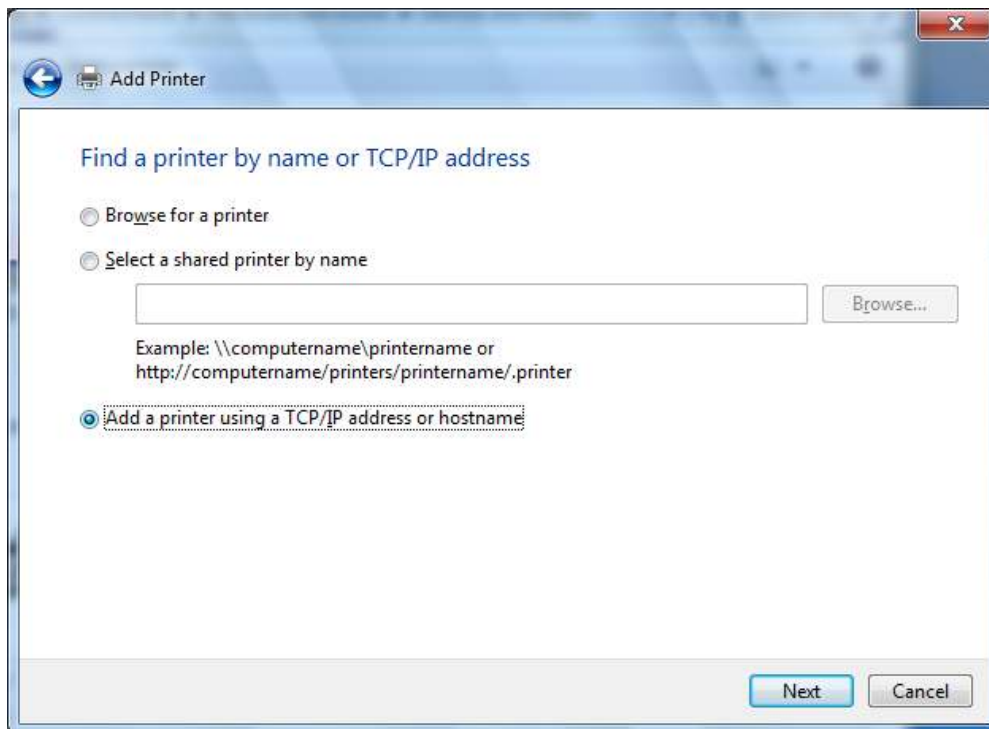
Select "Add a network, wireless or Bluetooth printer". Click "Next".



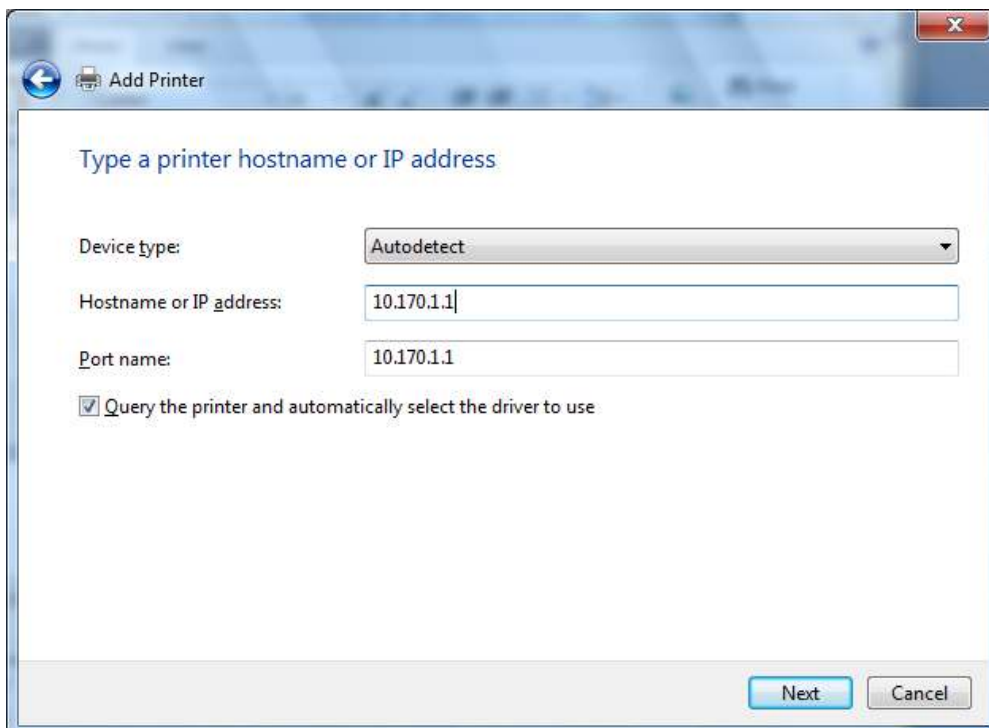
Windows will search for the connected printer. Click on "The printer that I want isn't listed"



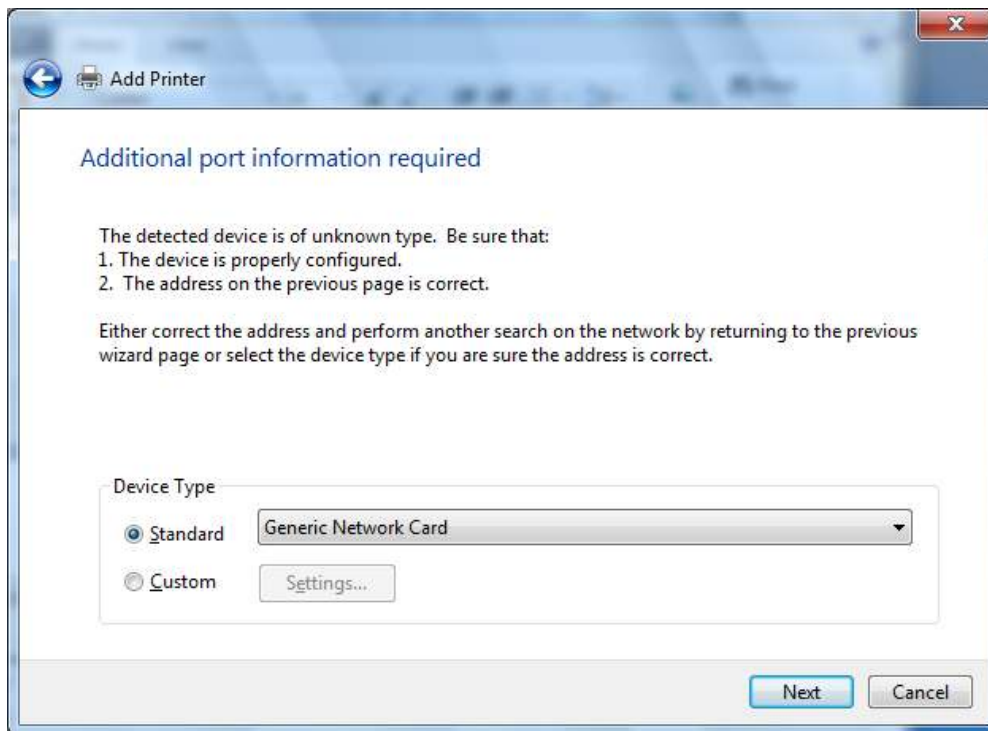
On the following screen, select “Add a printer using TCP/IP address or hostname”. Then click “Next”.



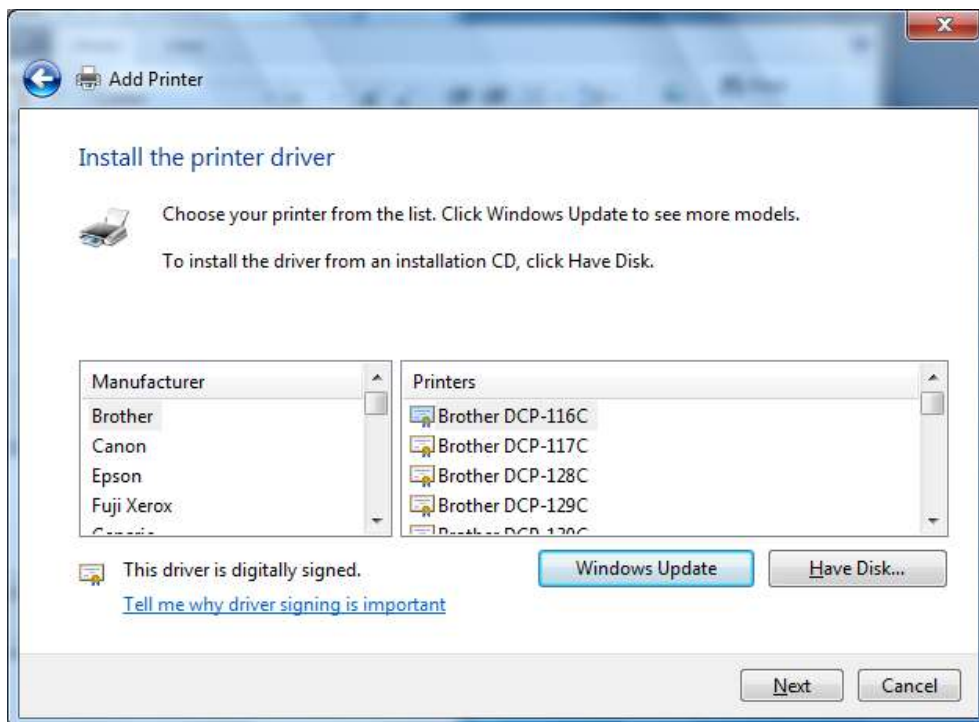
Type in the printer IP address in “Hostname or IP address” box. Printer IP address can be obtained from the printer configuration form.



On the next screen click "Next".

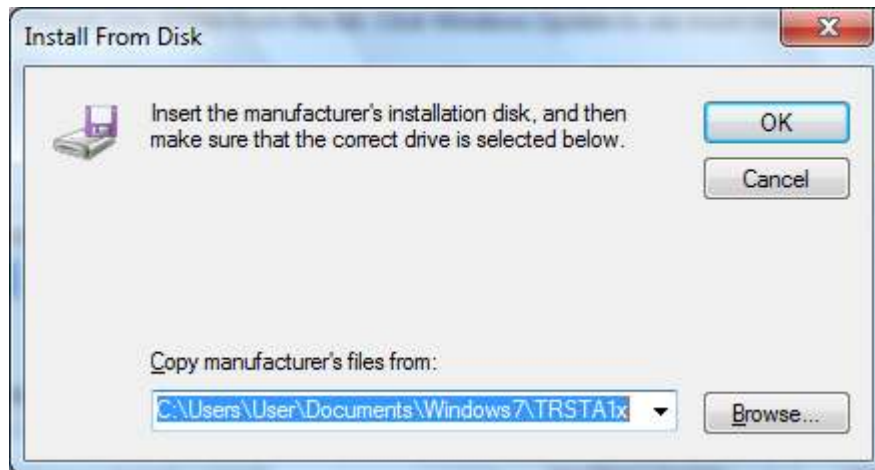


Click "Have Disk..." on below screen.

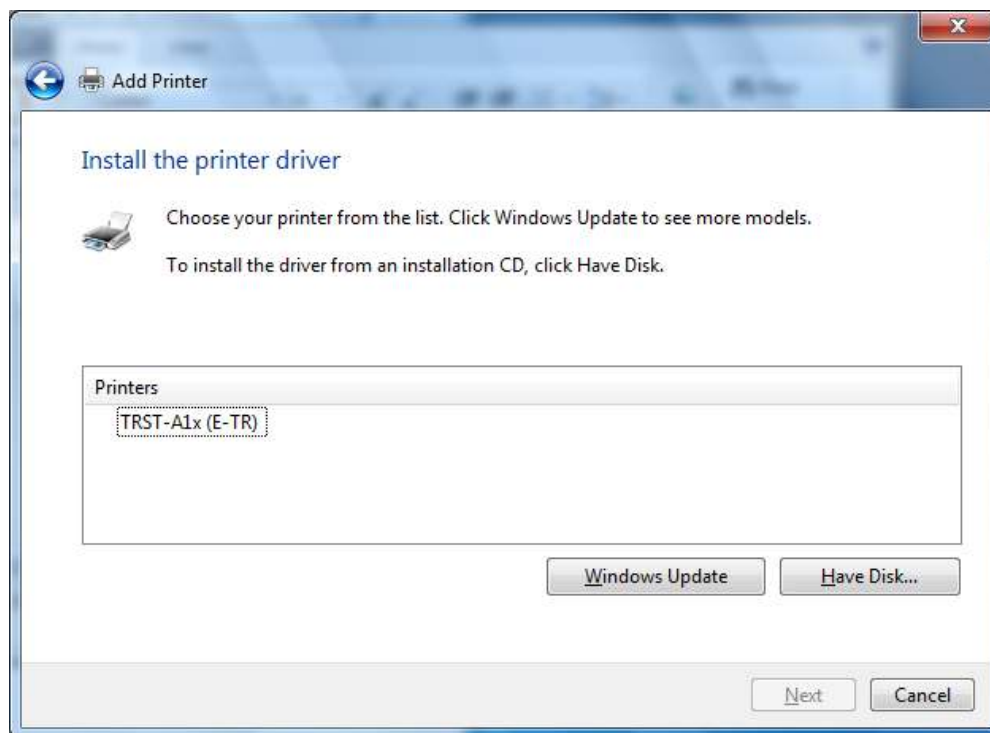




Specify the folder where the printer driver is saved. Click "OK".

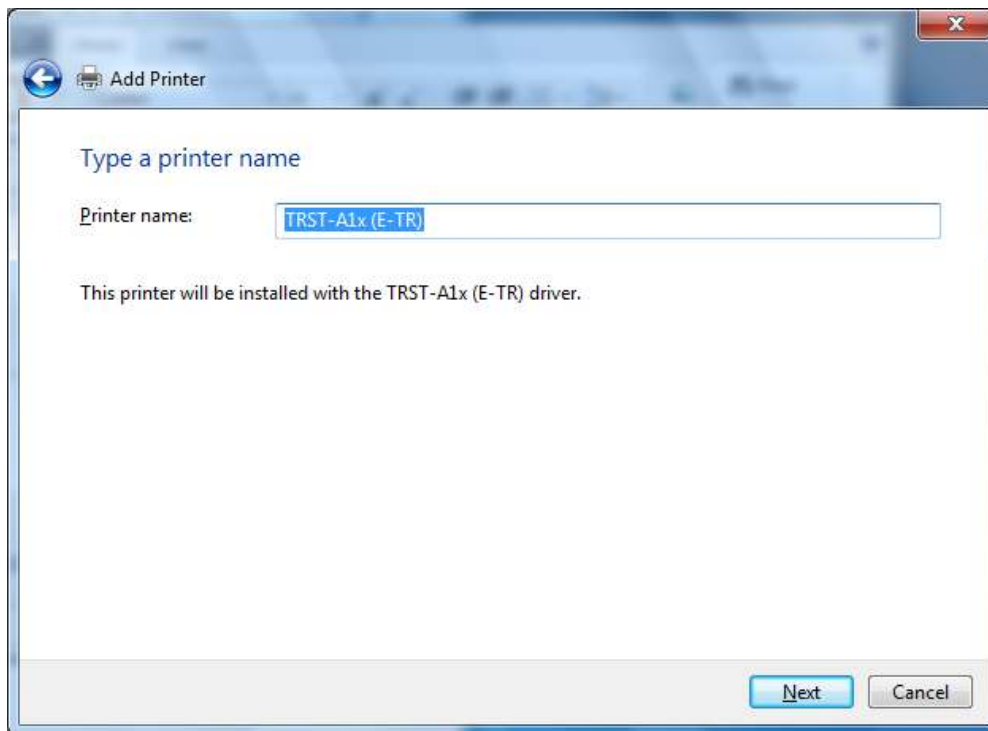


Select the "TRST-A1x (E-TR)" then click "Next" on below screen.

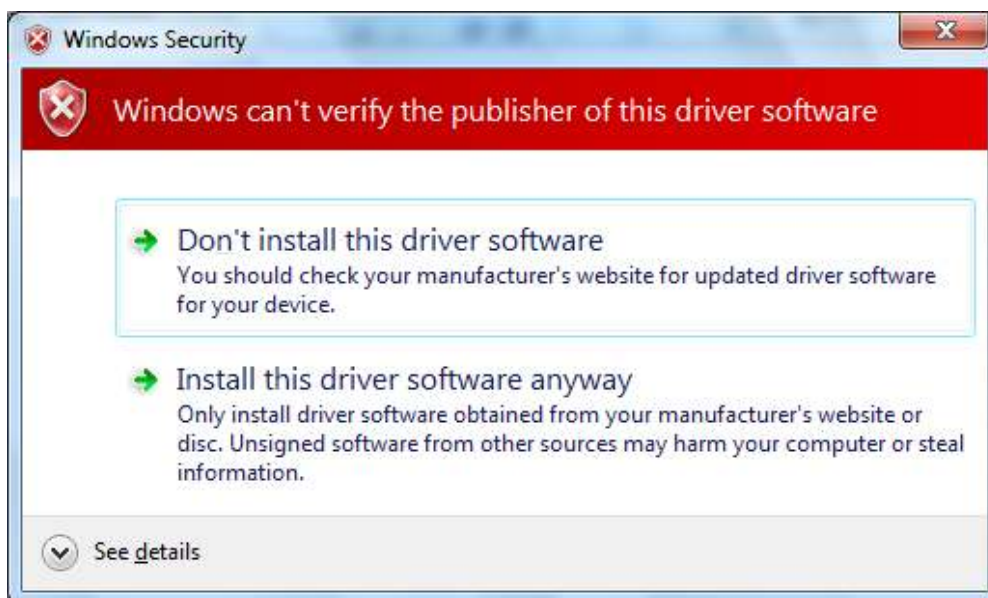




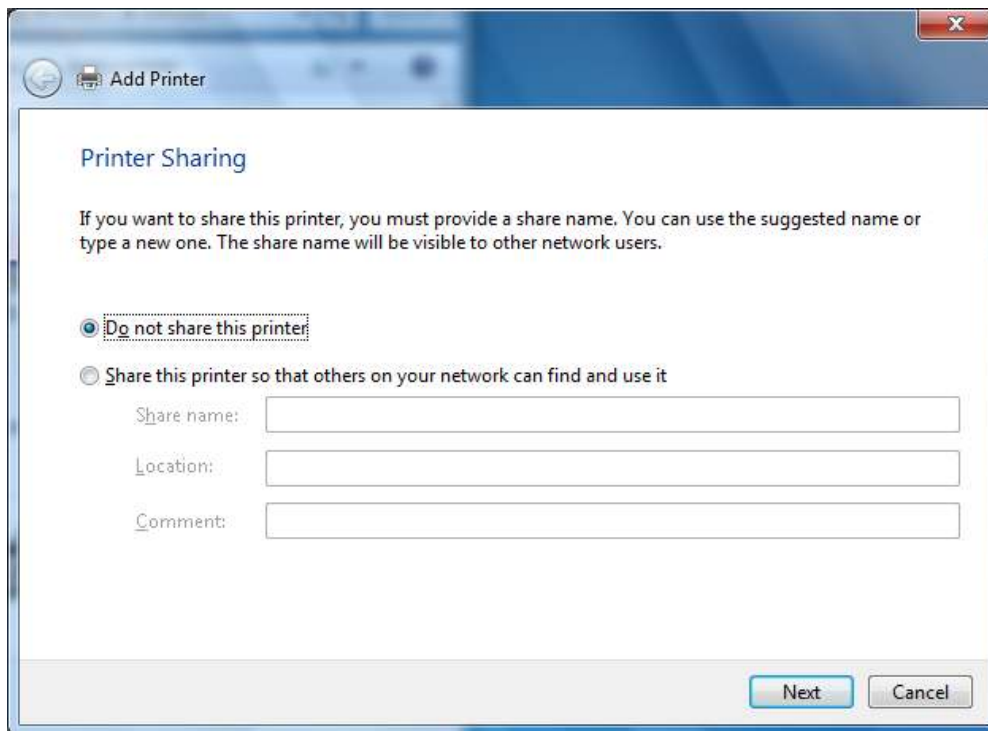
Supply a name for this printer, which you want to use. And if you want to use the printer as the default printer, click "Yes". Click "Next >" to continue the installation.



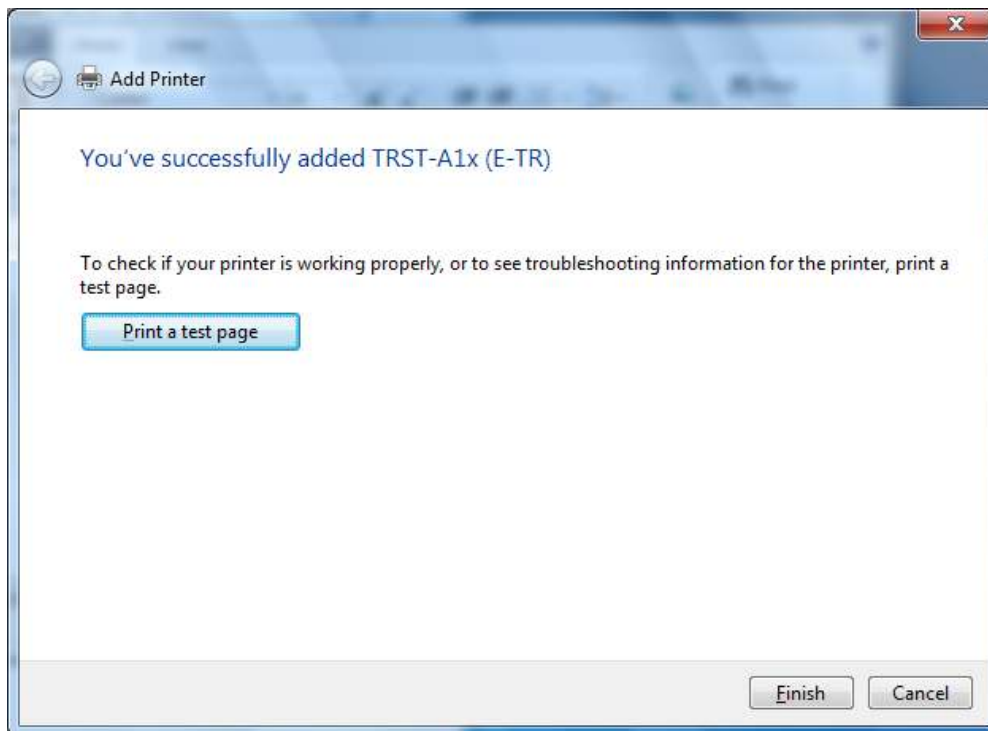
If the next screen appears, press "Install this driver software anyway".



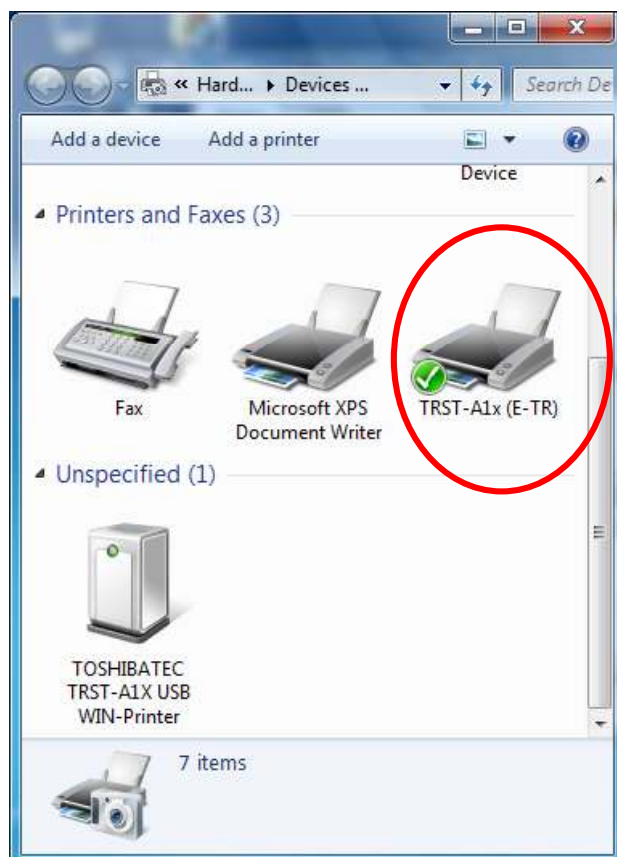
Select "Do not share this printer" and click "Next".



If you want to print a test page, click "Print a test page". Click "Finish" to complete the installation.



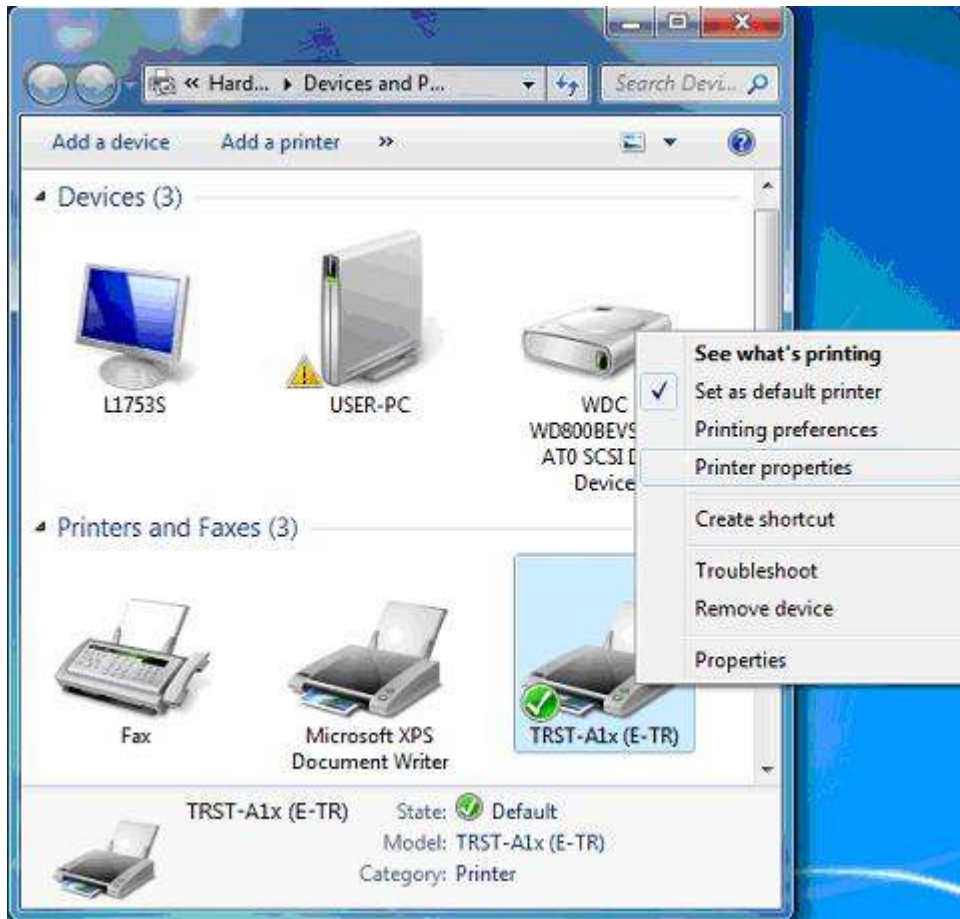
After installation finished, you will see the "TRST-A1x (E-TR)" icon in the "Devices and Printers" folder.



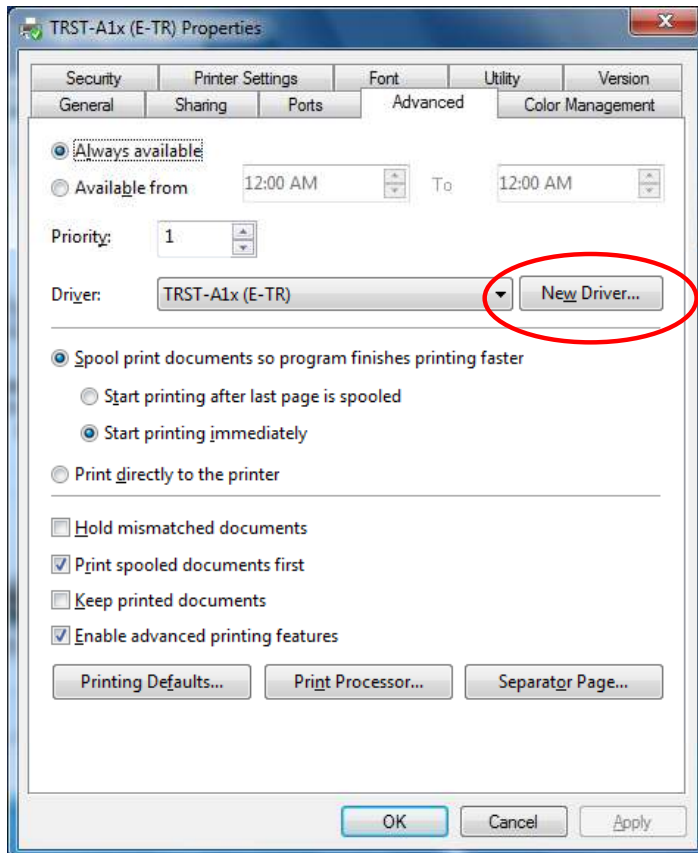
## 3 How to update the Printer Driver

### 3.1 Update Driver

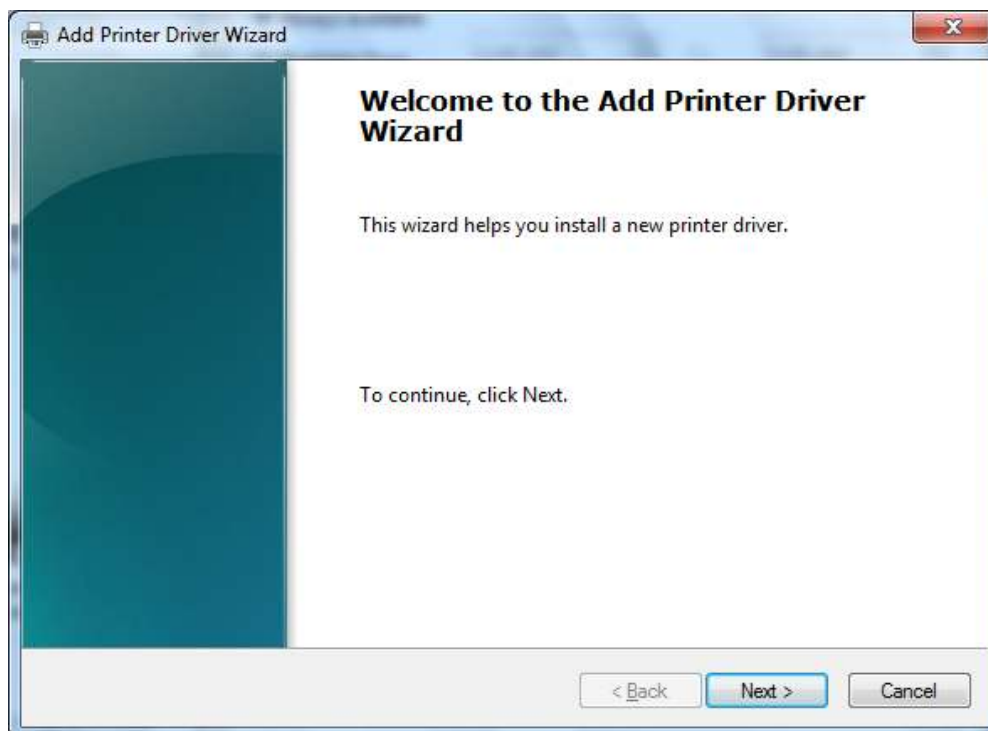
Click right button and select "Printer properties" on the "TRST-A1X" icon to open the printer's property.



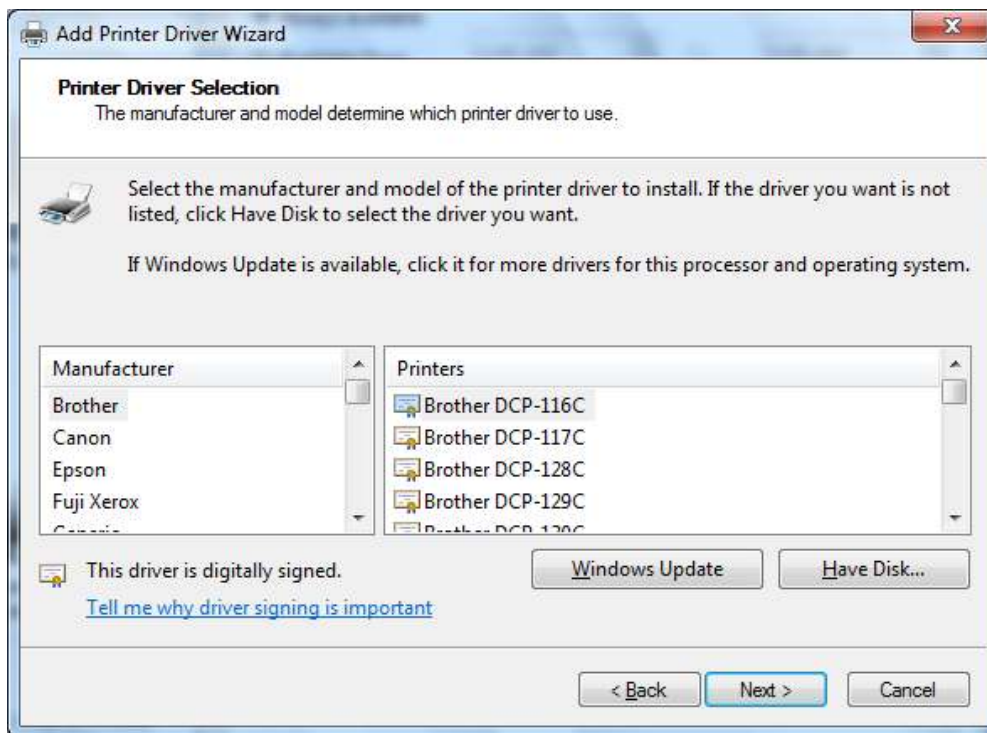
On the properties dialog, select **advanced** tab. Click "New Driver" on below screen.



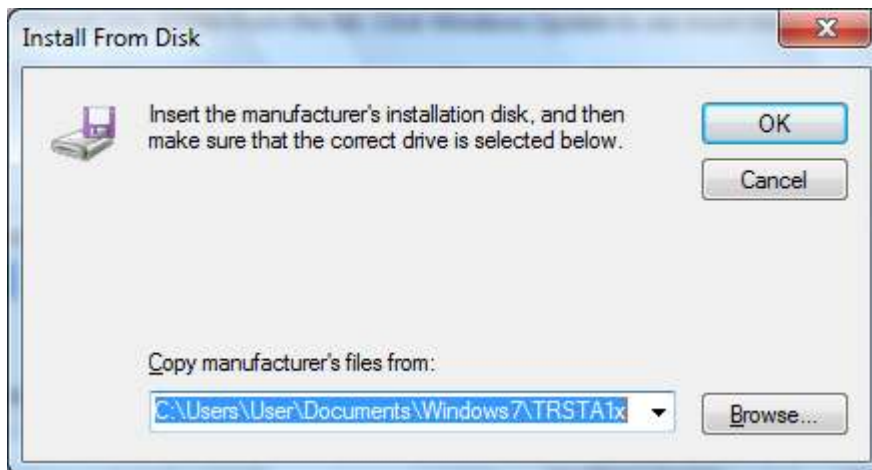
Click "Next >" on below screen.



Click "Have Disk..." on below screen.

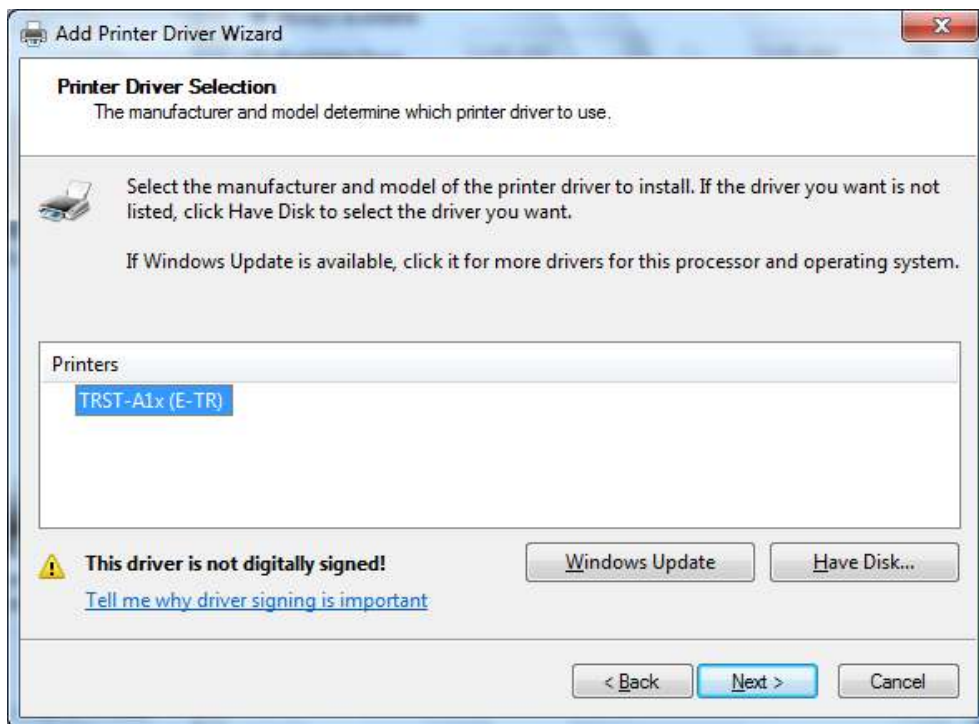


Specify the folder where the printer driver is saved. Click "OK".

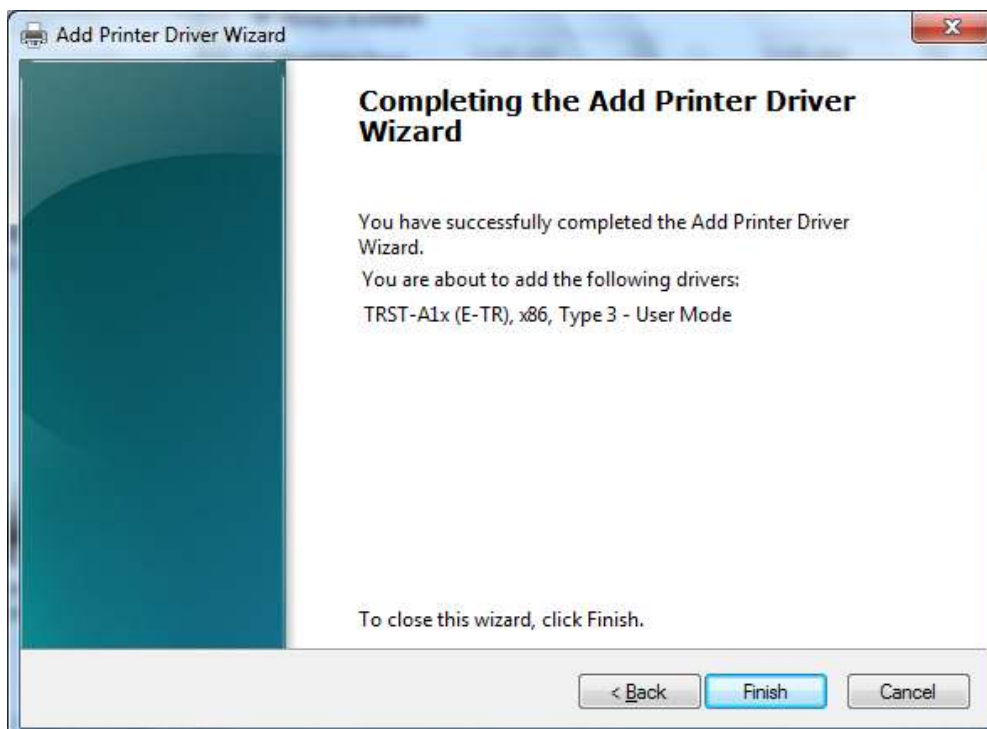




Click "Next >" on below screen.



Click "Finish" to completing the driver update.

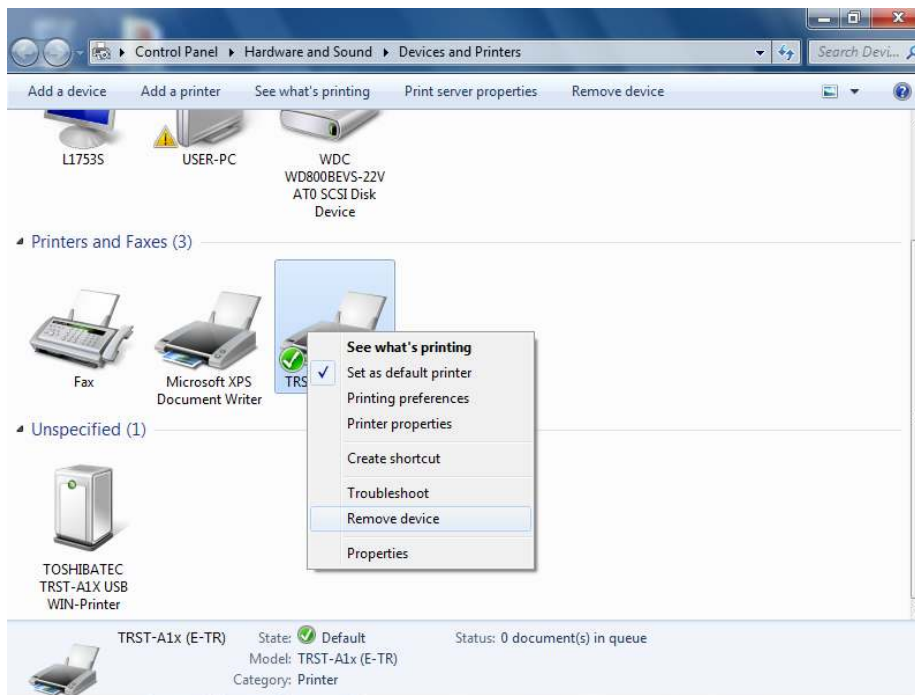


Lastly, **restart** the computer to update the printer driver.

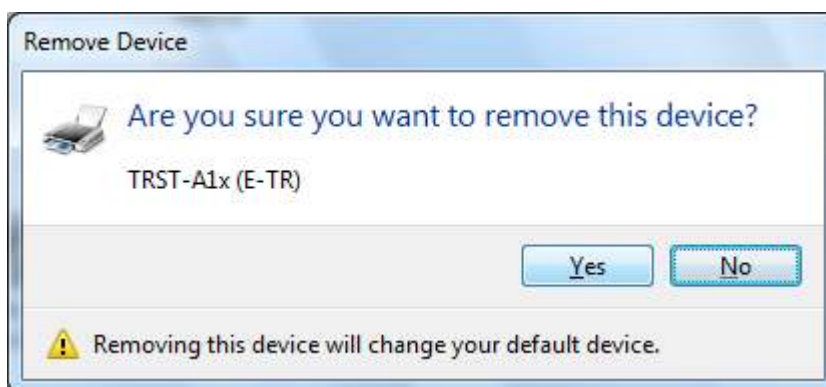
## 4 How to uninstall the Printer Driver

### 4.1 Uninstall Printer Driver for Windows 7

Right click on the “TRST-A1x (E-TR)” from “Devices and Printers” folder, then select “Remove Device”.

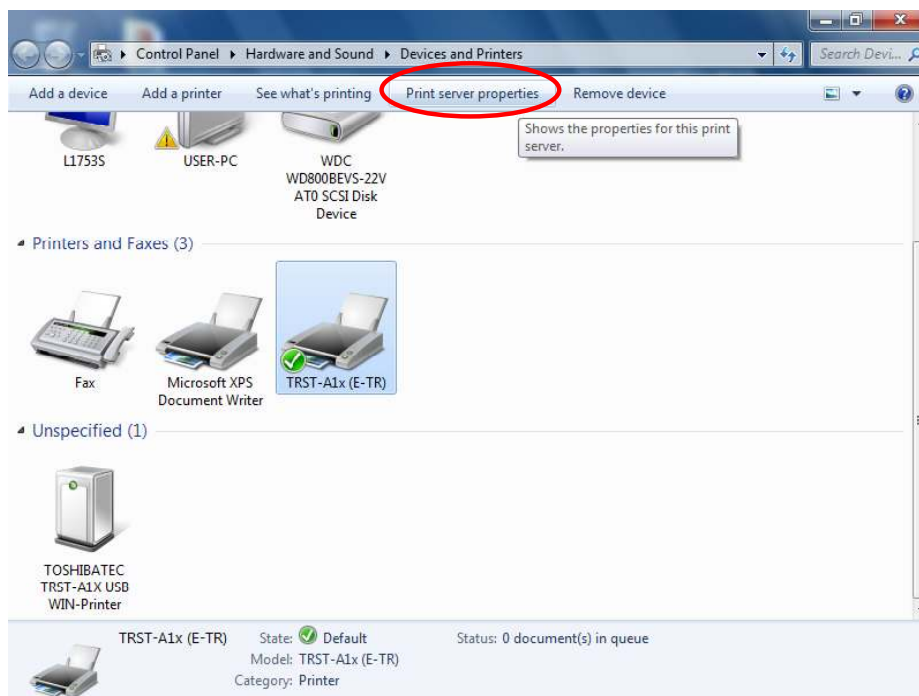


Click “Yes” on the next screen.

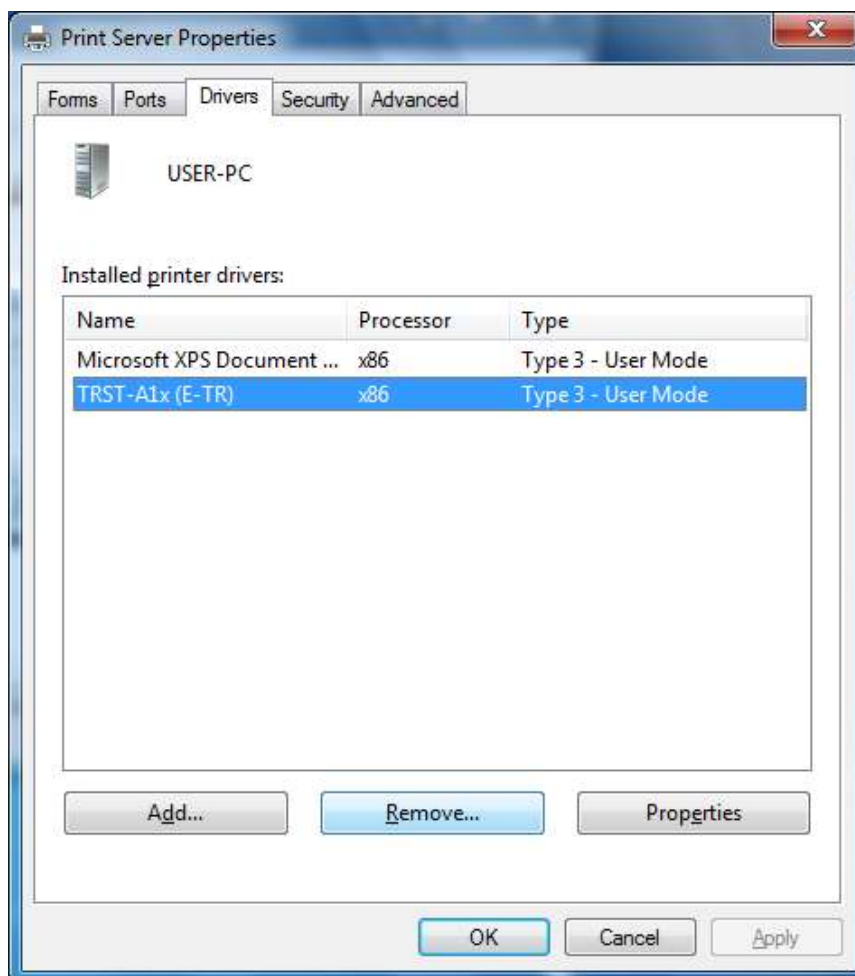


Select any printer icon (example, Microsoft XPS Document Writer) to display additional options at the top portion of the window. Click ‘Print server properties’.





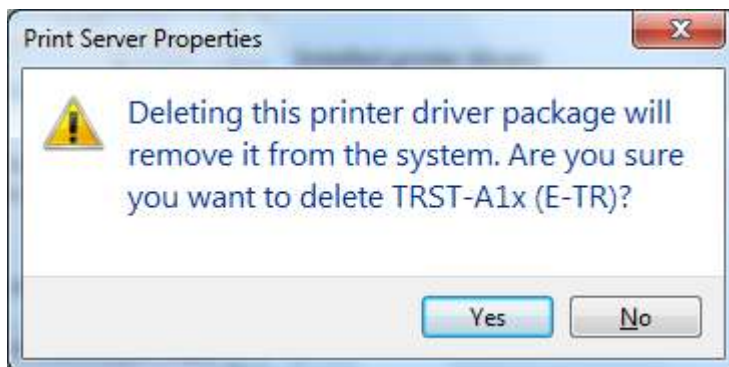
Go to the 'Drivers' tab and select 'TRST-A1x (E-TR)'. Click 'Remove'.



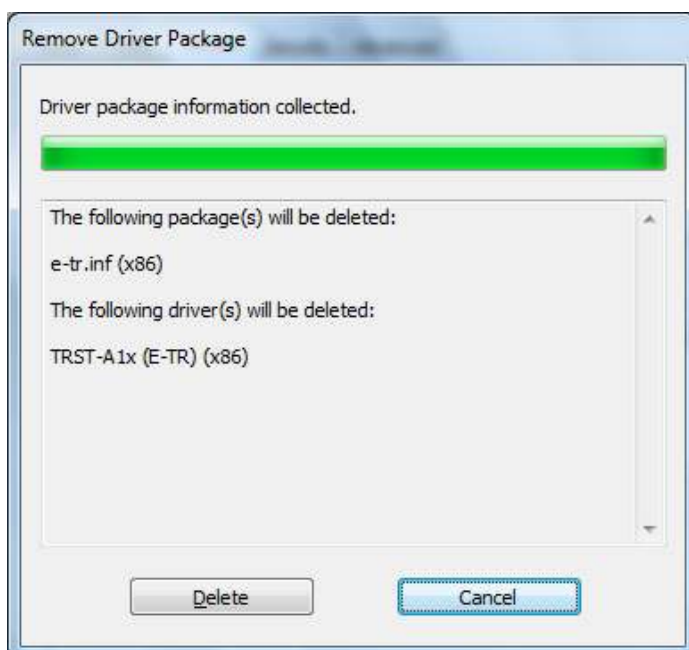
At the next dialog, select “Remove driver and driver package”, and press “OK”.



Press “Yes” on the next dialog.



Press “Delete” to confirm the installation on the next dialog.



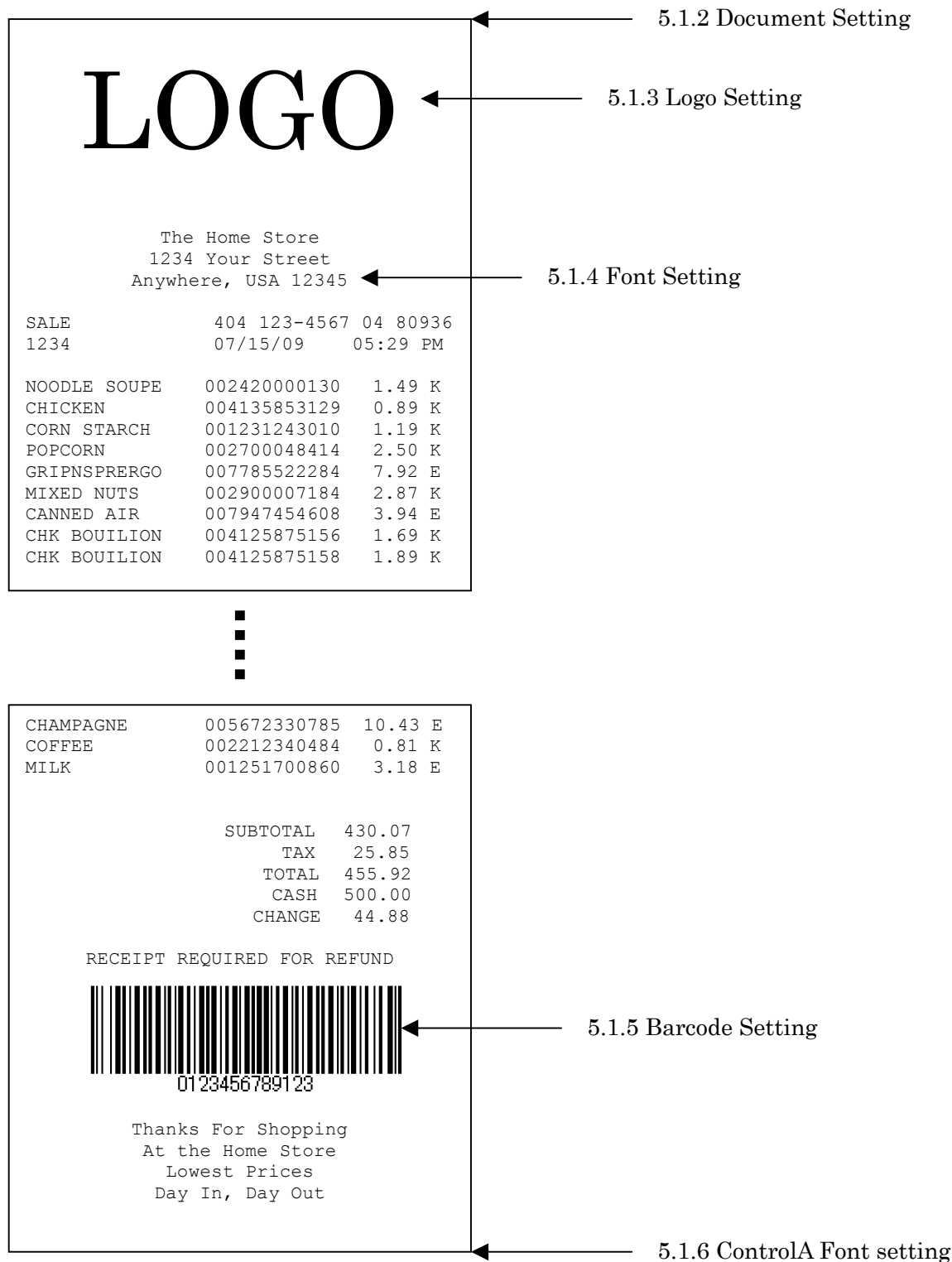
Press "OK" to complete the Installation.



**Restart PC.**

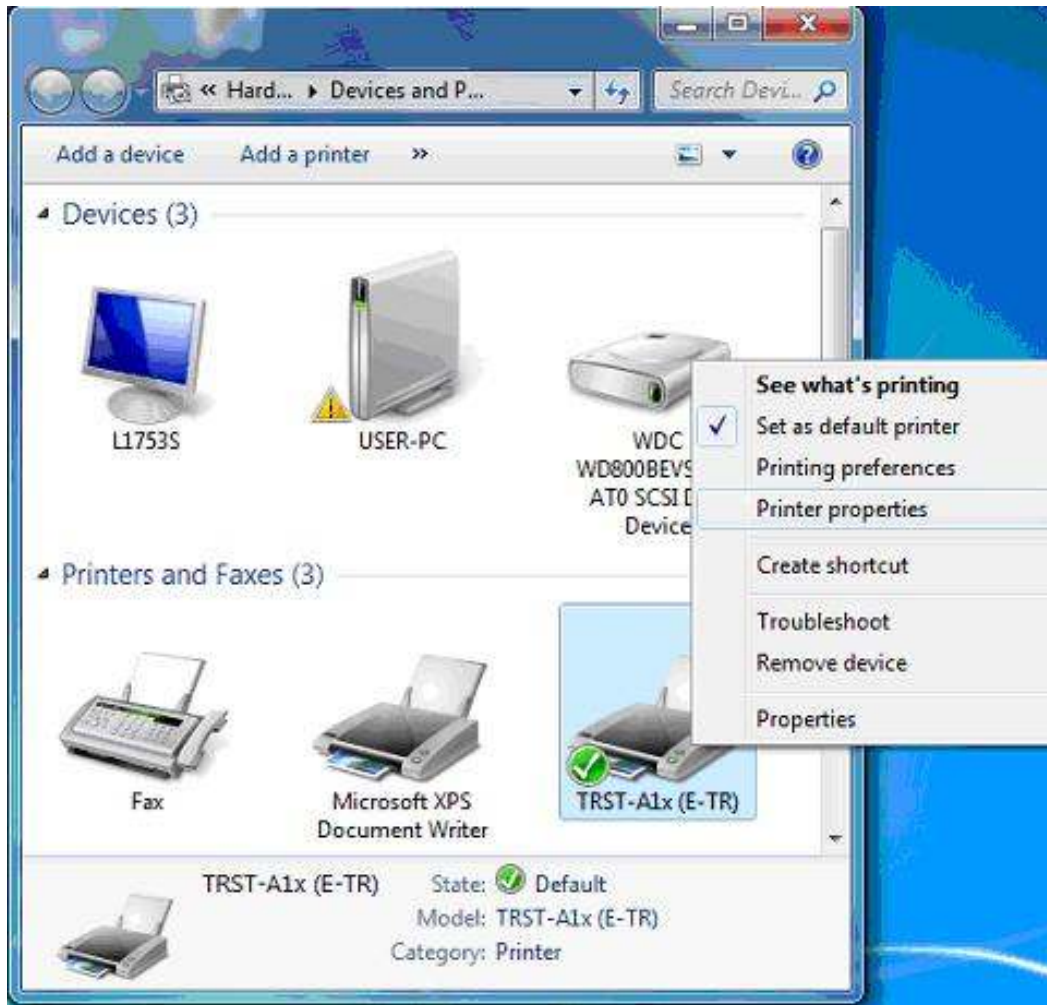
## 5 Examples for a receipt printing

### 5.1 Receipt Printing (Single side printing)

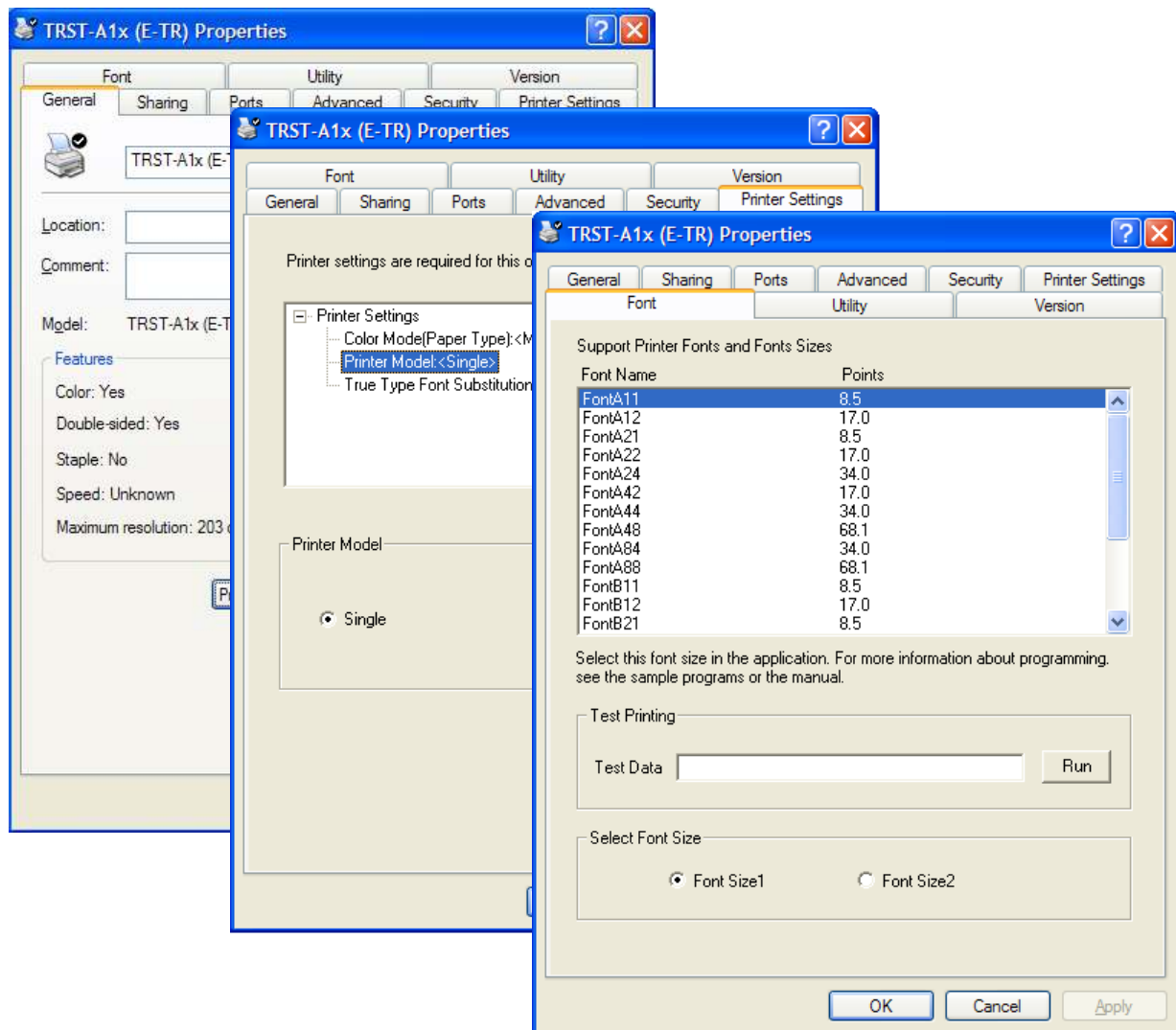


### 5.1.1 Printer model setting

- 1) Click right button and select "Properties" on the "TRST-A1X" icon to open the printer's property.

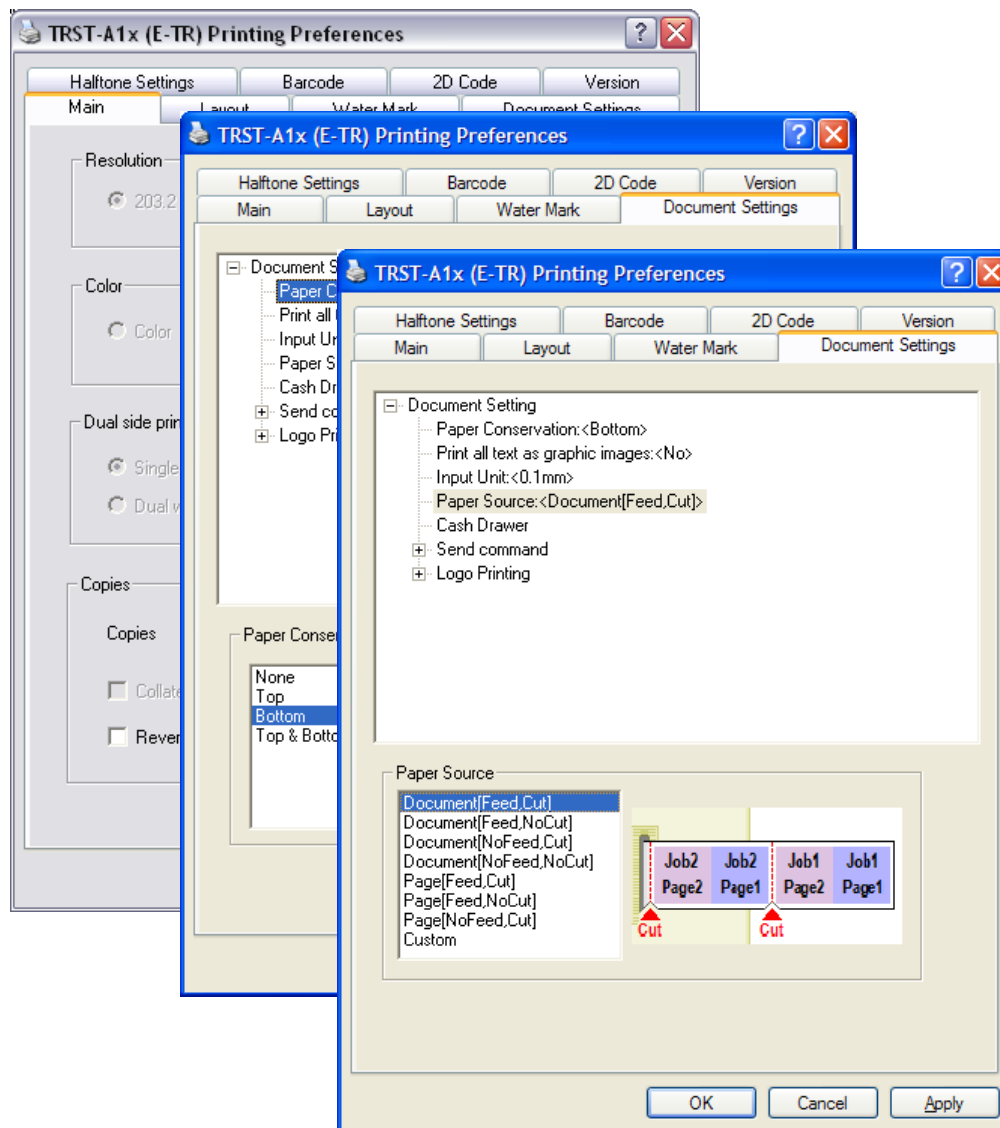


- 2) Click on **Printer Settings** tab. Select "Single" on the "Printer Model". Click "OK".  
The printer driver realizes that 1ST printer is connected.
- 3) Click on **Font** tab. Select the Font Size you want. Click "OK". Font size has to correspond to the printer font setting.



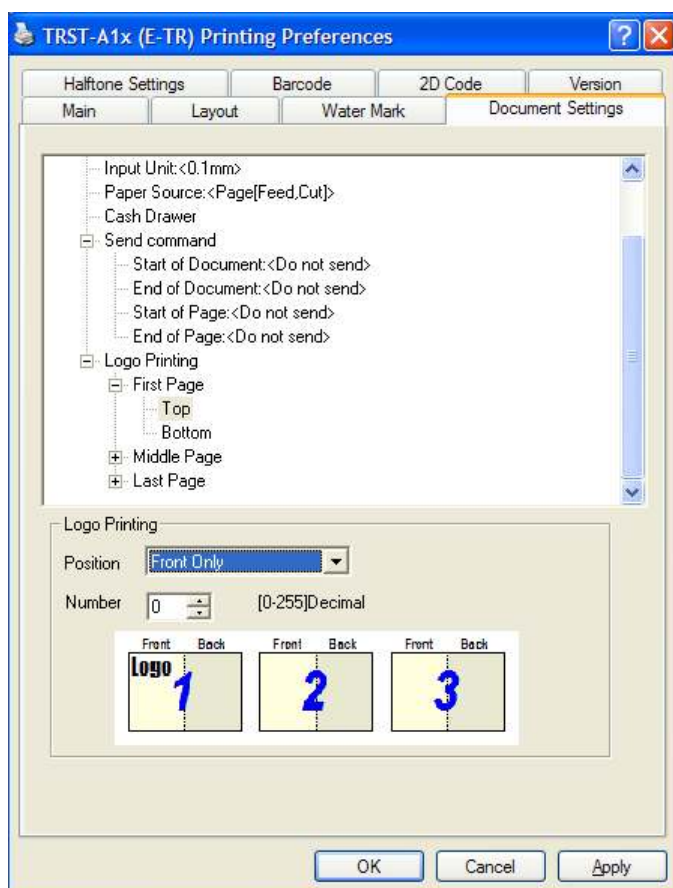
### 5.1.2 Document setting

- 1) In the receipt printing, the paper length doesn't matter. Since it depends on the number of items on a receipt, a receipt length is not specified. Select the specified paper size ([58mm x 297mm] or [80mm x 297mm]) that has the paper width you demand.
- 2) Click right button and select "Properties" on the "TRST-A1X" icon to open the printer's property (Same as "Printer Model Setting"), and click on "Printing Preference" button.  
Click on **Main** tab. Select "**single**" on Dual side printing Control.  
Click on **Document Settings** tab. Select "Bottom" on the "Paper Conservation". Click "OK".  
Also select "Document[Feed,Cut]" on the "Paper Source". Click "OK".  
According to the setting of the "Paper Conservation" and the "Paper Source", the receipt is cut at the proper position (end of receipt) automatically.



### 5.1.3 Logo setting

- 1) Click on **Document Settings** tab. Select "First Page - Top" on the "Logo Printing" to specify the logo position on the receipt. Select "Front Only" at the "Position" combo-box, also select the logo number at the "Number" combo box to specify the logo. The logo has to be downloaded by the TRST-A1x commander before this setting. Click "OK".



#### 5.1.4 Font setting

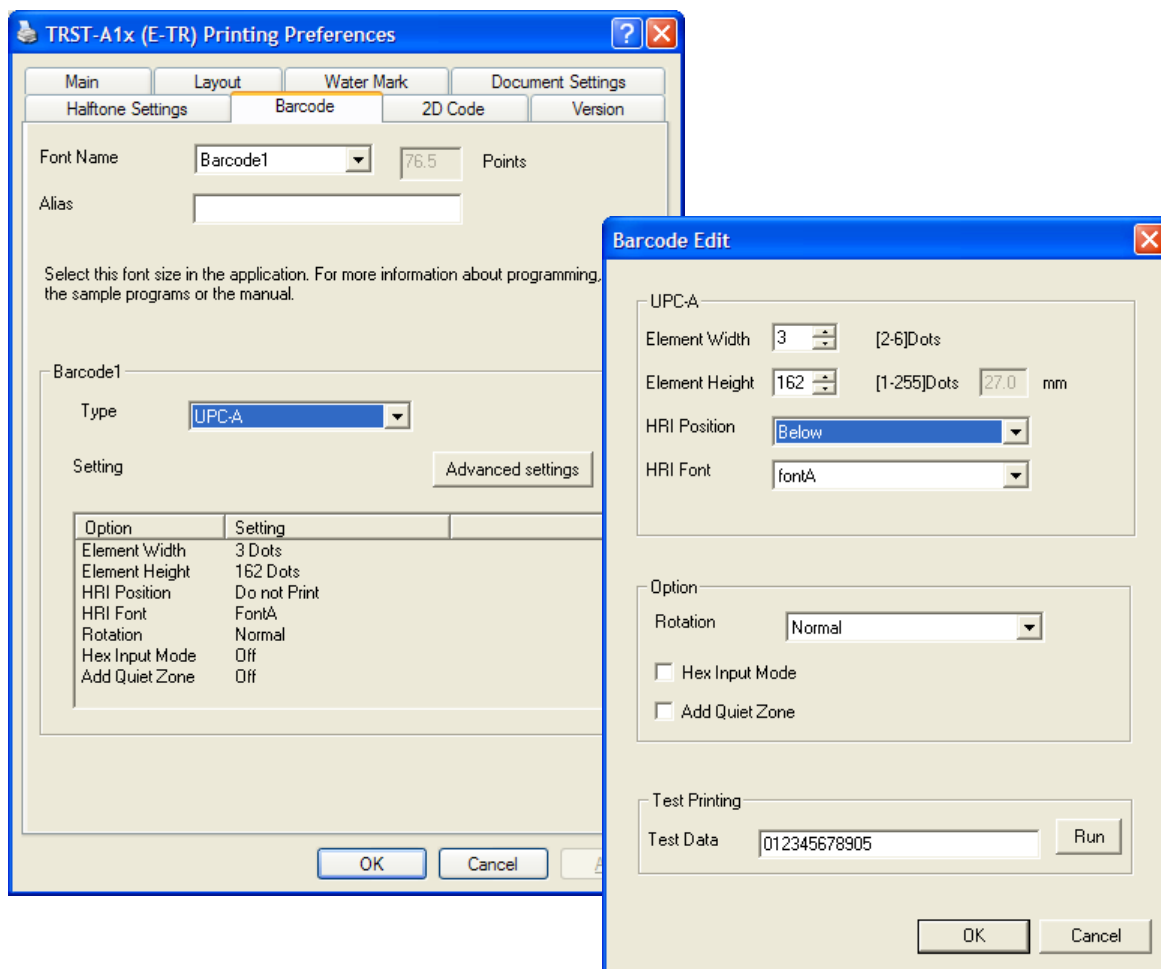
- 1) Select the printer font and send the character data to the printer. Following are printer fonts that can be selected by an application. The sizes of those fonts are fixed. Device font is not supported by .Net Framework technology. Any application developed by .Net Framework will not be able to display the device font. We recommend using Font Substitution instead.

Font1				Font2			
Font Name	Point	Font Name	Point	Font Name	Point	Font Name	Point
FontA11	8.5	FontB11	8.5	FontA11	9.9	FontB11	9.9
FontA12	17.0	FontB12	17.0	FontA12	19.9	FontB12	19.9
FontA21	8.5	FontB21	8.5	FontA21	9.9	FontB21	9.9
FontA22	17.0	FontB22	17.0	FontA22	19.9	FontB22	19.9
FontA24	34.0	FontB24	34.0	FontA24	39.7	FontB24	39.7
FontA42	17.0	FontB42	17.0	FontA42	19.9	FontB42	19.9
FontA44	34.0	FontB44	34.0	FontA44	39.7	FontB44	39.7
FontA48	68.1	FontB48	68.1	FontA48	79.4	FontB48	79.4
FontA84	34.0	FontB84	34.0	FontA84	39.7	FontB84	39.7
FontA88	68.1	FontB88	68.1	FontA88	79.4	FontB88	79.4



### 5.1.5 Barcode setting

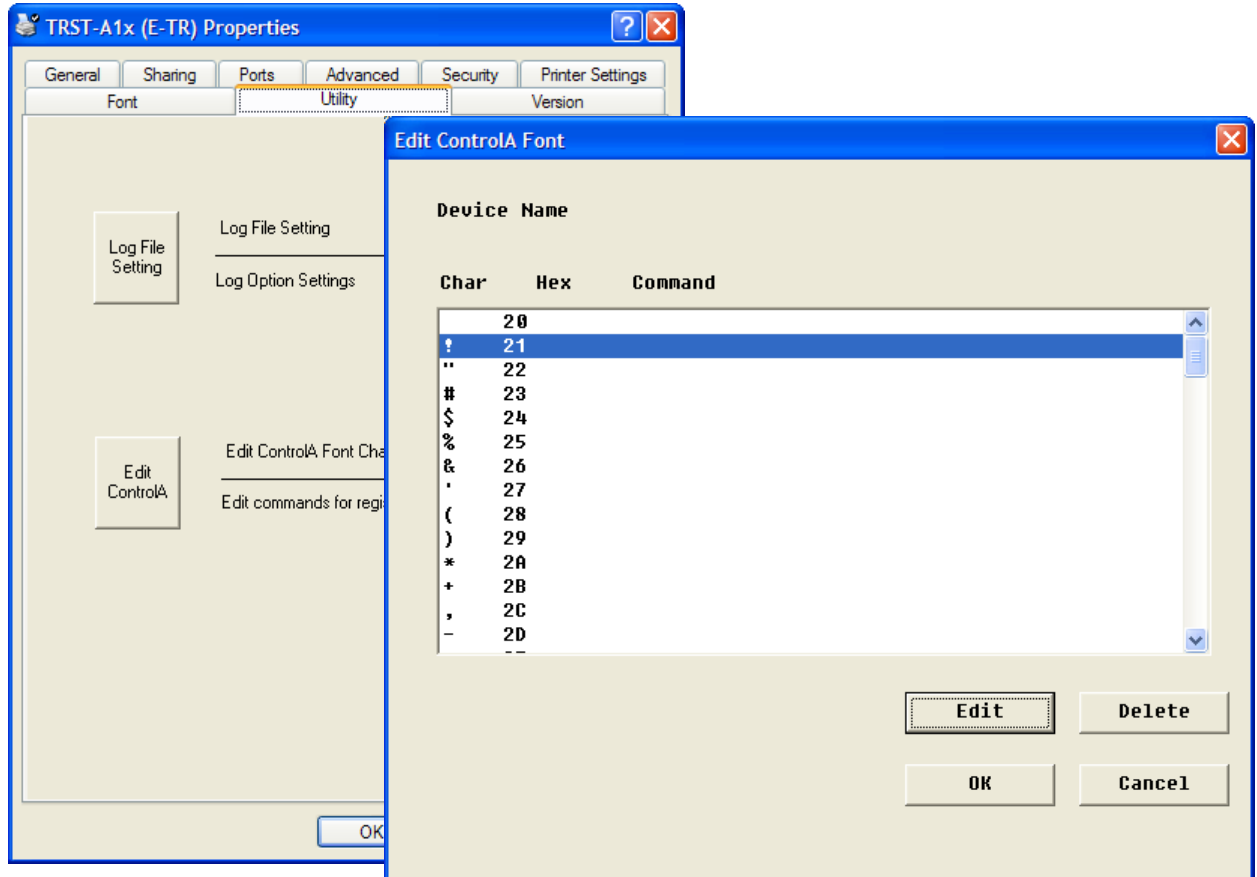
- 1) Click right button and select "Properties" on the "TRST-A1X" icon to open the printer's property (Same as "Printer Model Setting"), and click on "Printing Preference" button. Click on **Barcode** tab. Select "Barcode1" at the Font Name combo-box, and select the barcode type for Barcode1. Press "Advanced settings" button and specify the barcode attributes (width, height and HRI). Click "OK".



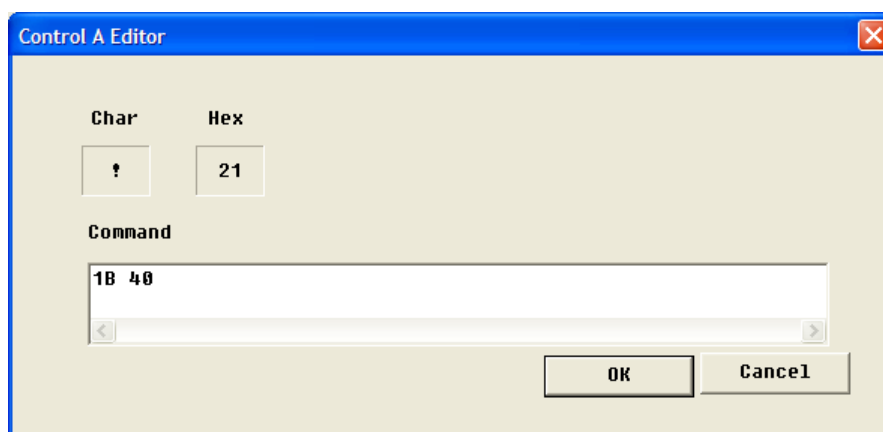
- 1) Select the Barcode1 font and send the numeral character data (e.g. "01234567890123") to the printer. Refer to "5.4 [Print Rendering](#)" in detail.

### 5.1.6 ControlA Font setting

- 2) Click right button and select "Properties" on the "TRST-A1X" icon to open the printer's property (Same as "Printer Model Setting), and click on "**Edit ControlA**" button on "**Utility**" Tab.
- 3) Select character "!" (0x21) and click on "**Edit**" button.




- 4) Input 1B 40 (Initialize the printer command) and click on OK.



- 5) Select the ControlA font and send "!" character to the printer. The printer will be initialized at the end of the receipt. Refer to "5.4 [Print Rendering](#)" in detail.

## 5.2 Receipt Printing (Dual side printing with Single Side Command)

Front Side	Back Side																																																																																																																												
<h1 style="font-size: 48px; margin: 0;">LOGO</h1> <p style="margin: 10px 0;">The Home Store 1234 Your Street Anywhere, USA 12345</p> <table border="0" style="width: 100%;"> <tr> <td style="width: 30%;">SALE</td> <td style="width: 30%;">404 123-4567</td> <td style="width: 40%;">04 80936</td> </tr> <tr> <td>1234</td> <td>07/15/09</td> <td>05:29 PM</td> </tr> </table> <table border="0" style="width: 100%;"> <tr><td>NOODLE SOUPE</td><td>002420000130</td><td>1.49 K</td></tr> <tr><td>CHICKEN</td><td>004135853129</td><td>0.89 K</td></tr> <tr><td>CORN STARCH</td><td>001231243010</td><td>1.19 K</td></tr> <tr><td>POPCORN</td><td>002700048414</td><td>2.50 K</td></tr> <tr><td>GRIPNSPRERGO</td><td>007785522284</td><td>7.92 E</td></tr> <tr><td>MIXED NUTS</td><td>002900007184</td><td>2.87 K</td></tr> <tr><td>CANNED AIR</td><td>007947454608</td><td>3.94 E</td></tr> <tr><td>CHK BOUILLION</td><td>004125875156</td><td>1.69 K</td></tr> <tr><td>CHICKEN</td><td>004135853129</td><td>0.89 K</td></tr> <tr><td>CORN STARCH</td><td>001231243010</td><td>1.19 K</td></tr> <tr><td>POPCORN</td><td>002700048414</td><td>2.50 K</td></tr> <tr><td>GRIPNSPRERGO</td><td>007785522284</td><td>7.92 E</td></tr> <tr><td>MIXED NUTS</td><td>002900007184</td><td>2.87 K</td></tr> <tr><td>CANNED AIR</td><td>007947454608</td><td>3.94 E</td></tr> <tr><td>CHK BOUILLION</td><td>004125875156</td><td>1.69 K</td></tr> <tr><td>CHICKEN</td><td>004125875158</td><td>1.89 K</td></tr> <tr><td>NOODLE SOUPE</td><td>002420000130</td><td>1.49 K</td></tr> <tr><td>CHICKEN</td><td>004135853129</td><td>0.89 K</td></tr> <tr><td>CORN STARCH</td><td>001231243010</td><td>1.19 K</td></tr> <tr><td>POPCORN</td><td>002700048414</td><td>2.50 K</td></tr> <tr><td>GRIPNSPRERGO</td><td>004125875158</td><td>1.89 K</td></tr> <tr><td>CHK BOUILLION</td><td>004125875158</td><td>1.89 K</td></tr> <tr><td>NOODLE SOUPE</td><td>002420000130</td><td>1.49 K</td></tr> <tr><td>CHK BOUILLION</td><td>004125875158</td><td>1.89 K</td></tr> </table>	SALE	404 123-4567	04 80936	1234	07/15/09	05:29 PM	NOODLE SOUPE	002420000130	1.49 K	CHICKEN	004135853129	0.89 K	CORN STARCH	001231243010	1.19 K	POPCORN	002700048414	2.50 K	GRIPNSPRERGO	007785522284	7.92 E	MIXED NUTS	002900007184	2.87 K	CANNED AIR	007947454608	3.94 E	CHK BOUILLION	004125875156	1.69 K	CHICKEN	004135853129	0.89 K	CORN STARCH	001231243010	1.19 K	POPCORN	002700048414	2.50 K	GRIPNSPRERGO	007785522284	7.92 E	MIXED NUTS	002900007184	2.87 K	CANNED AIR	007947454608	3.94 E	CHK BOUILLION	004125875156	1.69 K	CHICKEN	004125875158	1.89 K	NOODLE SOUPE	002420000130	1.49 K	CHICKEN	004135853129	0.89 K	CORN STARCH	001231243010	1.19 K	POPCORN	002700048414	2.50 K	GRIPNSPRERGO	004125875158	1.89 K	CHK BOUILLION	004125875158	1.89 K	NOODLE SOUPE	002420000130	1.49 K	CHK BOUILLION	004125875158	1.89 K	<table border="0" style="width: 100%;"> <tr><td>POPCORN</td><td>002700048414</td><td>2.50 K</td></tr> <tr><td>GRIPNSPRERGO</td><td>007785522284</td><td>7.92 E</td></tr> <tr><td>MIXED NUTS</td><td>002900007184</td><td>2.87 K</td></tr> <tr><td>CANNED AIR</td><td>007947454608</td><td>3.94 E</td></tr> <tr><td>CHK BOUILLION</td><td>004125875156</td><td>1.69 K</td></tr> <tr><td>CHICKEN</td><td>004135853129</td><td>0.89 K</td></tr> <tr><td>CORN STARCH</td><td>001231243010</td><td>1.19 K</td></tr> <tr><td>POPCORN</td><td>002700048414</td><td>2.50 K</td></tr> <tr><td>GRIPNSPRERGO</td><td>007785522284</td><td>7.92 E</td></tr> <tr><td>CHAMPAGNE</td><td>005672330785</td><td>10.43 E</td></tr> <tr><td>COFFEE</td><td>002212340484</td><td>0.81 K</td></tr> <tr><td>MILK</td><td>001251700860</td><td>3.18 E</td></tr> </table> <table border="0" style="width: 100%;"> <tr><td style="text-align: right;">SUBTOTAL</td><td>430.07</td></tr> <tr><td style="text-align: right;">TAX</td><td>25.85</td></tr> <tr><td style="text-align: right;">TOTAL</td><td>455.92</td></tr> <tr><td style="text-align: right;">CASH</td><td>500.00</td></tr> <tr><td style="text-align: right;">CHANGE</td><td>44.88</td></tr> </table> <p style="text-align: center;">RECEIPT REQUIRED FOR REFUND</p>  <p style="text-align: center;">0123456789123 Thanks For Shopping At the Home Store Lowest Prices Day In, Day Out</p>	POPCORN	002700048414	2.50 K	GRIPNSPRERGO	007785522284	7.92 E	MIXED NUTS	002900007184	2.87 K	CANNED AIR	007947454608	3.94 E	CHK BOUILLION	004125875156	1.69 K	CHICKEN	004135853129	0.89 K	CORN STARCH	001231243010	1.19 K	POPCORN	002700048414	2.50 K	GRIPNSPRERGO	007785522284	7.92 E	CHAMPAGNE	005672330785	10.43 E	COFFEE	002212340484	0.81 K	MILK	001251700860	3.18 E	SUBTOTAL	430.07	TAX	25.85	TOTAL	455.92	CASH	500.00	CHANGE	44.88
SALE	404 123-4567	04 80936																																																																																																																											
1234	07/15/09	05:29 PM																																																																																																																											
NOODLE SOUPE	002420000130	1.49 K																																																																																																																											
CHICKEN	004135853129	0.89 K																																																																																																																											
CORN STARCH	001231243010	1.19 K																																																																																																																											
POPCORN	002700048414	2.50 K																																																																																																																											
GRIPNSPRERGO	007785522284	7.92 E																																																																																																																											
MIXED NUTS	002900007184	2.87 K																																																																																																																											
CANNED AIR	007947454608	3.94 E																																																																																																																											
CHK BOUILLION	004125875156	1.69 K																																																																																																																											
CHICKEN	004135853129	0.89 K																																																																																																																											
CORN STARCH	001231243010	1.19 K																																																																																																																											
POPCORN	002700048414	2.50 K																																																																																																																											
GRIPNSPRERGO	007785522284	7.92 E																																																																																																																											
MIXED NUTS	002900007184	2.87 K																																																																																																																											
CANNED AIR	007947454608	3.94 E																																																																																																																											
CHK BOUILLION	004125875156	1.69 K																																																																																																																											
CHICKEN	004125875158	1.89 K																																																																																																																											
NOODLE SOUPE	002420000130	1.49 K																																																																																																																											
CHICKEN	004135853129	0.89 K																																																																																																																											
CORN STARCH	001231243010	1.19 K																																																																																																																											
POPCORN	002700048414	2.50 K																																																																																																																											
GRIPNSPRERGO	004125875158	1.89 K																																																																																																																											
CHK BOUILLION	004125875158	1.89 K																																																																																																																											
NOODLE SOUPE	002420000130	1.49 K																																																																																																																											
CHK BOUILLION	004125875158	1.89 K																																																																																																																											
POPCORN	002700048414	2.50 K																																																																																																																											
GRIPNSPRERGO	007785522284	7.92 E																																																																																																																											
MIXED NUTS	002900007184	2.87 K																																																																																																																											
CANNED AIR	007947454608	3.94 E																																																																																																																											
CHK BOUILLION	004125875156	1.69 K																																																																																																																											
CHICKEN	004135853129	0.89 K																																																																																																																											
CORN STARCH	001231243010	1.19 K																																																																																																																											
POPCORN	002700048414	2.50 K																																																																																																																											
GRIPNSPRERGO	007785522284	7.92 E																																																																																																																											
CHAMPAGNE	005672330785	10.43 E																																																																																																																											
COFFEE	002212340484	0.81 K																																																																																																																											
MILK	001251700860	3.18 E																																																																																																																											
SUBTOTAL	430.07																																																																																																																												
TAX	25.85																																																																																																																												
TOTAL	455.92																																																																																																																												
CASH	500.00																																																																																																																												
CHANGE	44.88																																																																																																																												

To print the receipt (shown in 5.1) on dual side as above, select the "Dual w/Single Side Cmd" of "Dual Side Printing Control" in printing preference setting of the printer driver.

Other settings have to be same as the single receipt printing mentioned above.

Please take note that for this printing mode, the document source should be in single page and the printing result will be half on front page and half on back page.

### 5.3 Receipt Printing (Dual side printing with Double Side Command)

#### 1<sup>st</sup> page of document on Front Side

LOGO

The Home Store  
1234 Your Street  
Anywhere, USA 12345

SALE	404 123-4567	04	80936
1234	07/15/09	05:29	PM

NOODLE SOUPE	002420000130	1.49	K
CHICKEN	004135853129	0.89	K
CORN STARCH	001231243010	1.19	K
POPCORN	002700048414	2.50	K
GRIPNSPRERGO	007785522284	7.92	E
MIXED NUTS	002900007184	2.87	K
CANNED AIR	007947454608	3.94	E
CHK BOUILLION	004125875156	1.69	K
CHICKEN	004135853129	0.89	K
CORN STARCH	001231243010	1.19	K
POPCORN	002700048414	2.50	K
GRIPNSPRERGO	007785522284	7.92	E
MIXED NUTS	002900007184	2.87	K
CANNED AIR	007947454608	3.94	E
CHK BOUILLION	004125875156	1.69	K
CHICKEN	004135853129	0.89	K
CORN STARCH	001231243010	1.19	K
POPCORN	002700048414	2.50	K
GRIPNSPRERGO	004125875158	1.89	K
CHK BOUILLION	004125875158	1.89	K
NOODLE SOUPE	002420000130	1.49	K
CHK BOUILLION	004125875158	1.89	K

#### 2<sup>nd</sup> page of document on Back Side

POPCORN	002700048414	2.50	K
GRIPNSPRERGO	007785522284	7.92	E
MIXED NUTS	002900007184	2.87	K
CANNED AIR	007947454608	3.94	E
CHK BOUILLION	004125875156	1.69	K
CHICKEN	004135853129	0.89	K
CORN STARCH	001231243010	1.19	K
POPCORN	002700048414	2.50	K
GRIPNSPRERGO	007785522284	7.92	E
CHAMPAGNE	005672330785	10.43	E
COFFEE	002212340484	0.81	K
MILK	001251700860	3.18	E

SUBTOTAL	430.07
TAX	25.85
TOTAL	455.92
CASH	500.00
CHANGE	44.88

RECEIPT REQUIRED FOR REFUND



0123456789123

Thanks For Shopping  
At the Home Store  
Lowest Prices  
Day In, Day Out

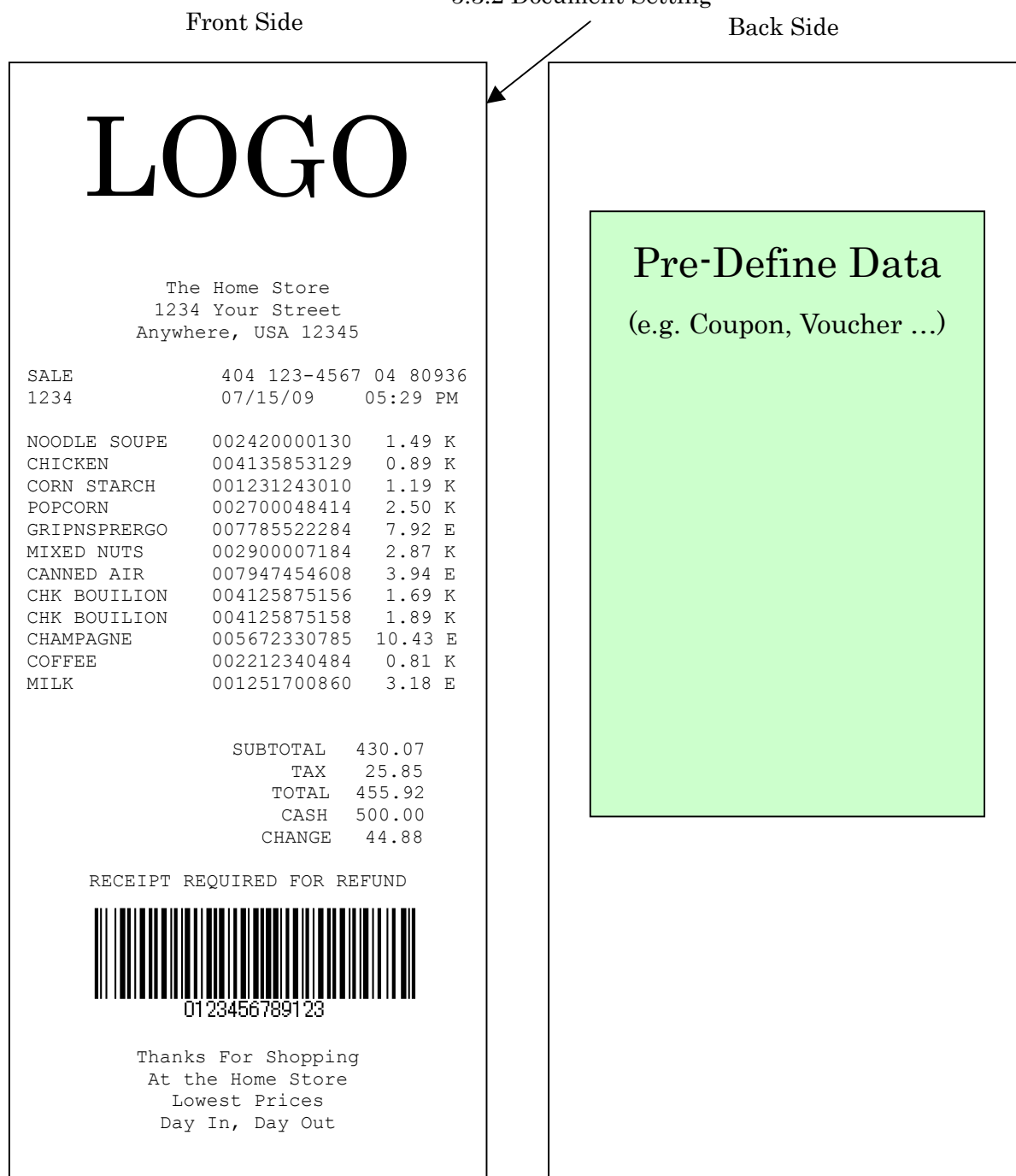
To print the above receipt (2 pages document) on dual side, select the "Dual w/Double Side Cmd" of "Dual Side Printing Control" in printing preference setting of the printer driver.

Other settings have to be same as the single receipt printing mentioned above.

Please take note that for this printing mode, the document source should be in 2 pages and the printing result will be 1<sup>st</sup> page on front page and 2<sup>nd</sup> page on back page.

## 5.4 Receipt Printing (Dual side printing with Pre-Defined data)

### 5.3.2 Document Setting

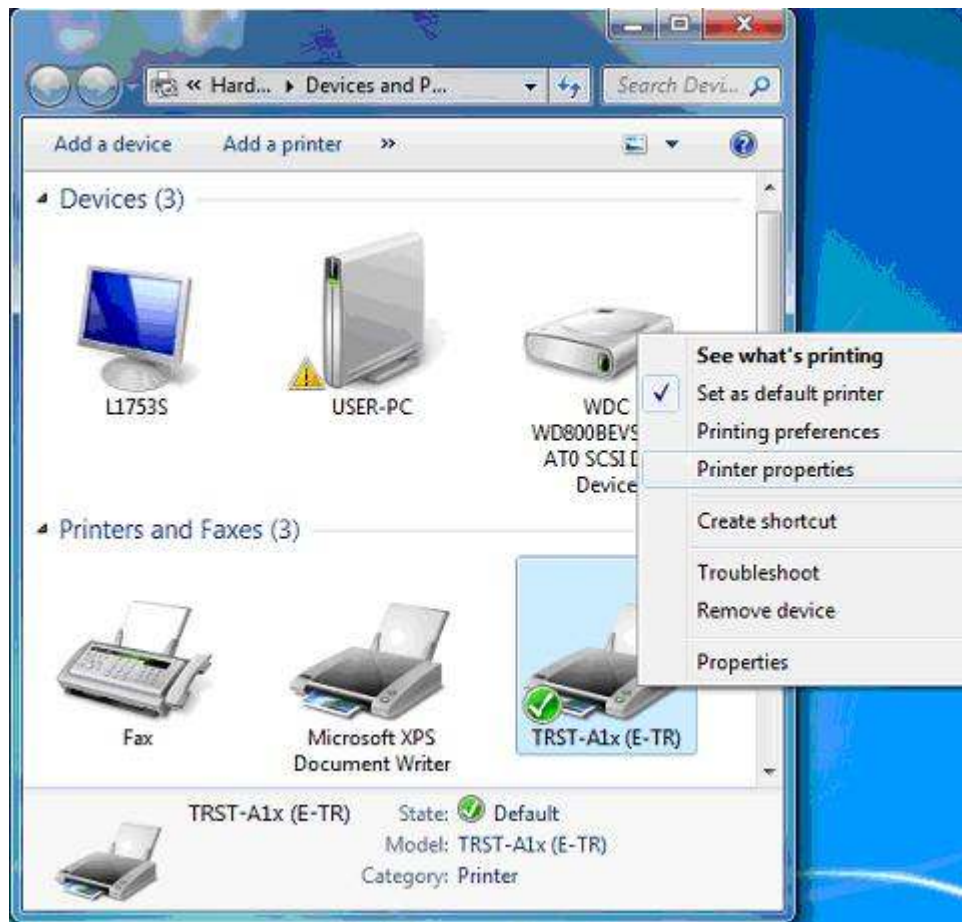


This example shows only the different settings compared to the "Single Receipt Printing". Other settings not described are same as the setting of the "Single Receipt Printing".

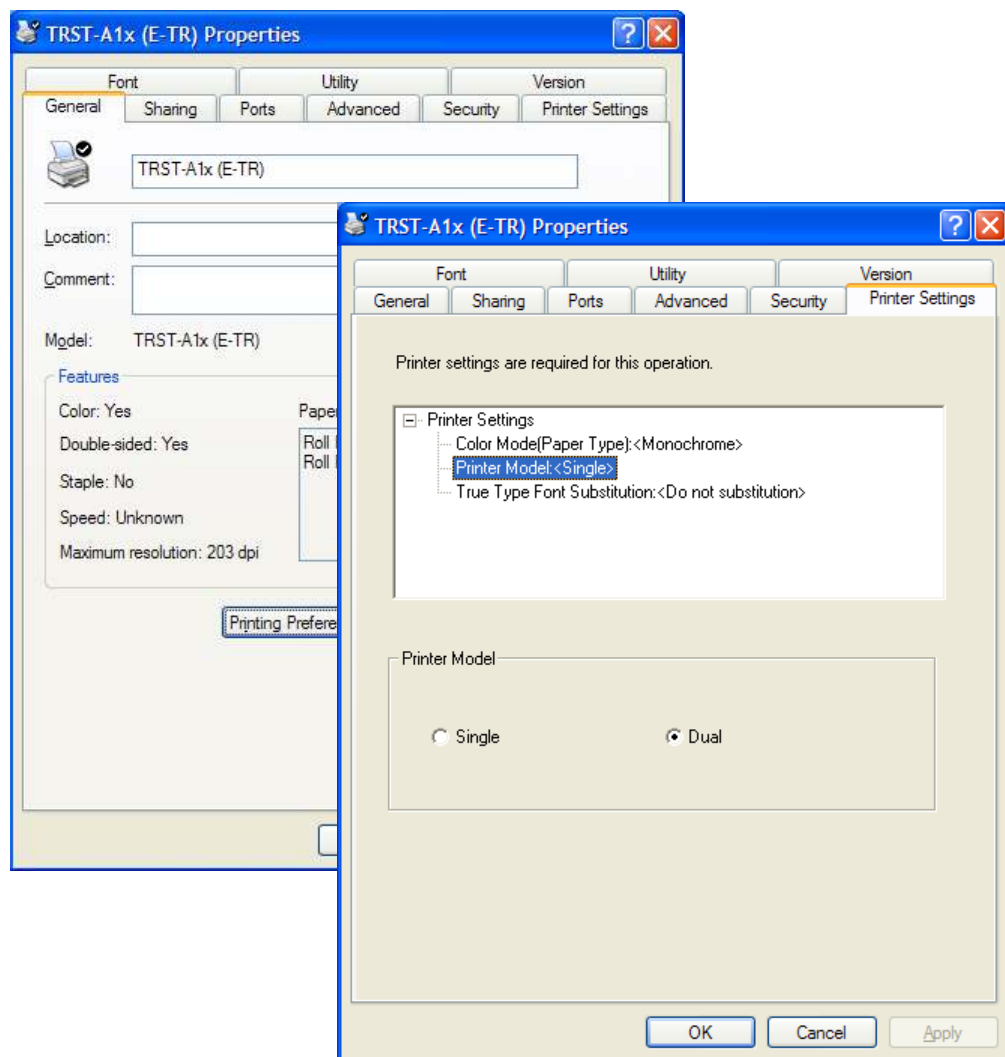
To print the pre-defined data on the back side, the pre-defined data has to be downloaded to the printer in advance.

### 5.4.1 Printer model setting

- 1) Click right button and select "Properties" on the "TRST-A1X" icon to open the printer's property.



- 2) Click on **Printer Settings** tab. Select "Dual" on the "Printer Model". Click "OK".  
The printer driver realizes that 2ST printer is connected.

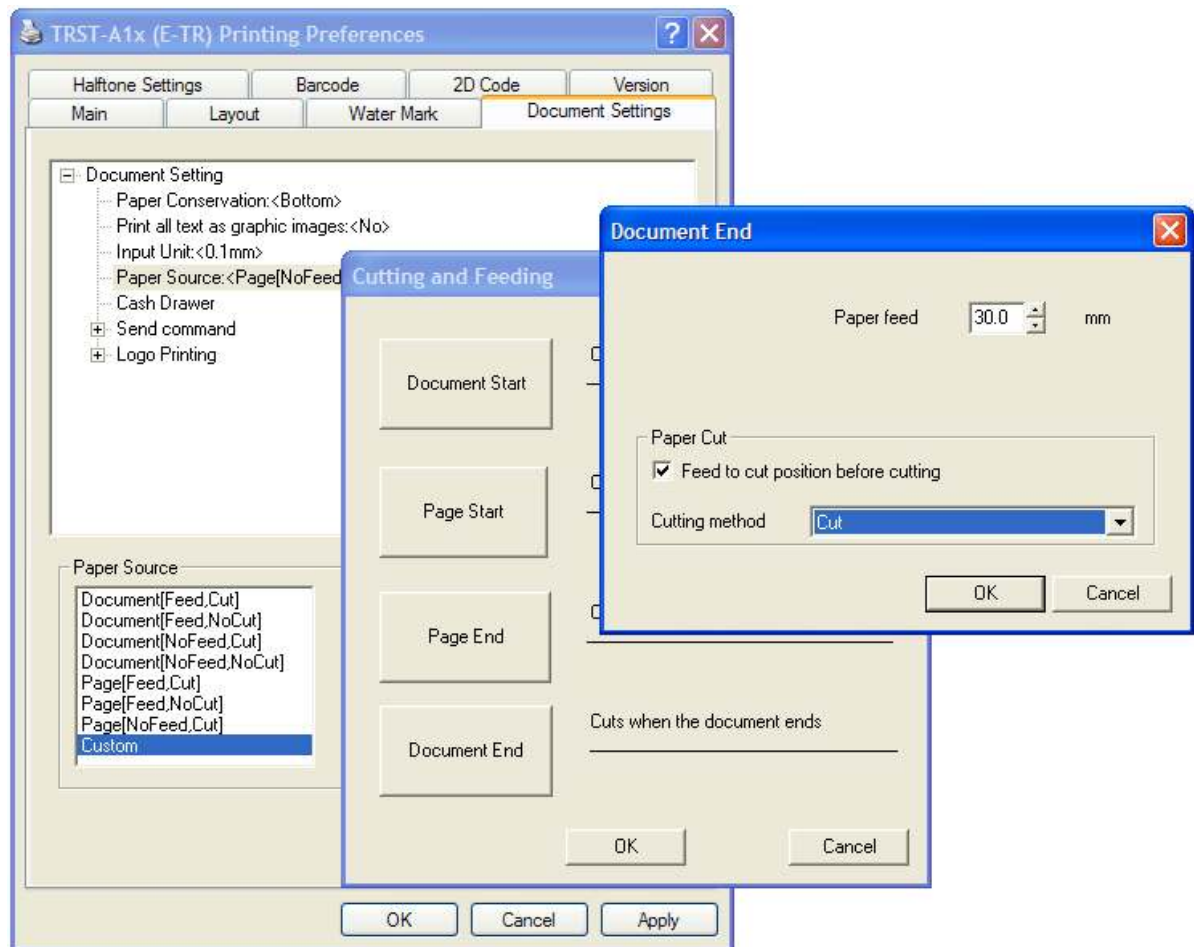


#### 5.4.2 Document setting

- 1) Click right button and select "Properties" on the "TRST-A1X" icon to open the printer's property (Same as "Printer Model Setting"), and click on "Printing Preference" button.

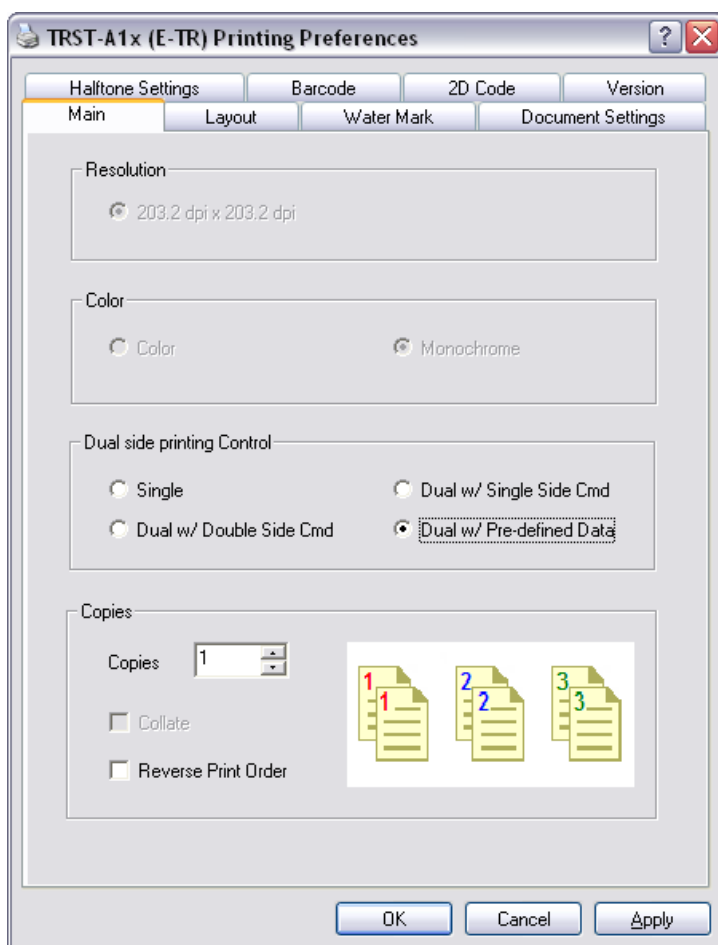
Click on **Document Settings** tab. Select "Custom" on the "Paper Source". Click "Document End" button.

Set the "Paper feed" to 30mmm, Click on "**Feed to cut position before cutting**" and select "**Cut**" at the Cutting method combo-box. Click "OK".

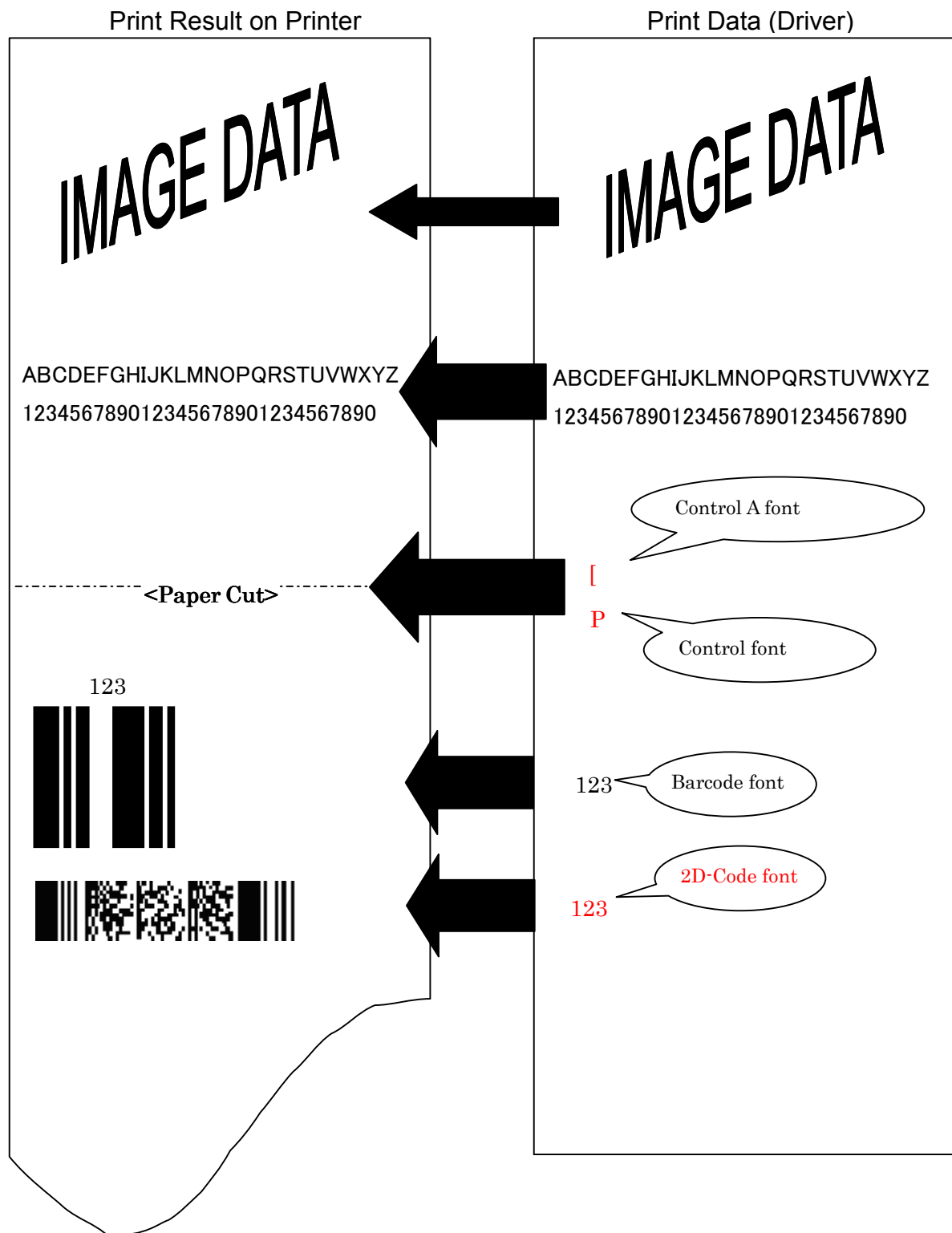




- 2) Click on **Main** tab. Select "Dual with Pre-Defined Data" on Dual side printing Control.



## 5.5 Print Rendering



## 6 Note

### 6.1 Log file setting

This function is for the analysis of the printer and the printer driver issues. Therefore please don't change this setting normally. It would slow down the performance.

### 6.2 Restrictions

Following are some restrictions to be noted for dual side printing control using the driver:

	Single	Dual w/ Single Side Cmd	Dual w/ Double Side Cmd	Dual w/ Predefined Data
Logo Printing	Δ*1	O	Δ*2	Δ*2
Top / Bottom message	X	O	Δ*2	Δ*2
Document / Page mode	O	O	Δ*3	Δ*3

\*1 : User can either select "None" or "Front Only" for logo printing

\*2 : If there is no back side data, the logo/ message on back side will not be printed

\*3 : Only Page Mode available