

The background features three light blue circles of varying sizes. Two thin blue lines intersect diagonally across the page, one from the top-left and another from the top-right.

**OPOS DRIVER**

**VFD Series Vacuum  
Fluorescent  
Customer Display**  
Instruction Manual

# VFD Series Customer Display

## Product Overview

The VFD Series Customer Display features high-illumination (up to 1000 cd/m<sup>2</sup>) and fast-responding Vacuum Fluorescent Display that can provide vivid information relating to transactions or marketing. With the space-saving compact design and multi-language supports (international fonts and various Asian-Fonts support), VFD series customer display is best to fit Pole Display for most POS terminals.

Beyond the versatile stylish design, VFD series customer display features flexible mechanical designs to meet the diversity of counter design and convenience for customers. Up to 53 degree/360 degree rotation mechanism and telescopic/fixed pole design, it's easy to install VFD series customer display and gives your counter a refreshing and elegant look.

With the connectivity of RS-232/USB interface and easy-configuration utility software, users can setup the display within short times and effortless. Compatible for popular emulation configure codes, VFD series customer display is your high-performance, cost-effective choice to meet the budget-saving strategies.

This document has been divided into two Sections i.e.

### 1) Installation Manual

### 2) User Manual

Let's discuss one by one using screen shots in details.

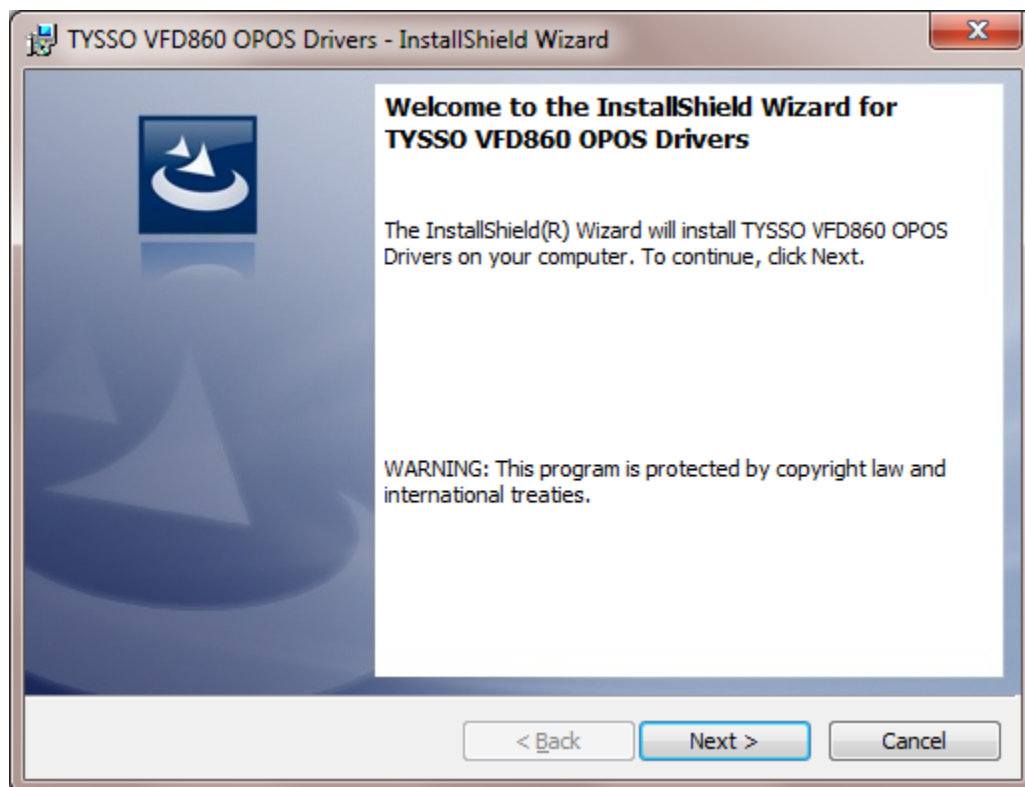
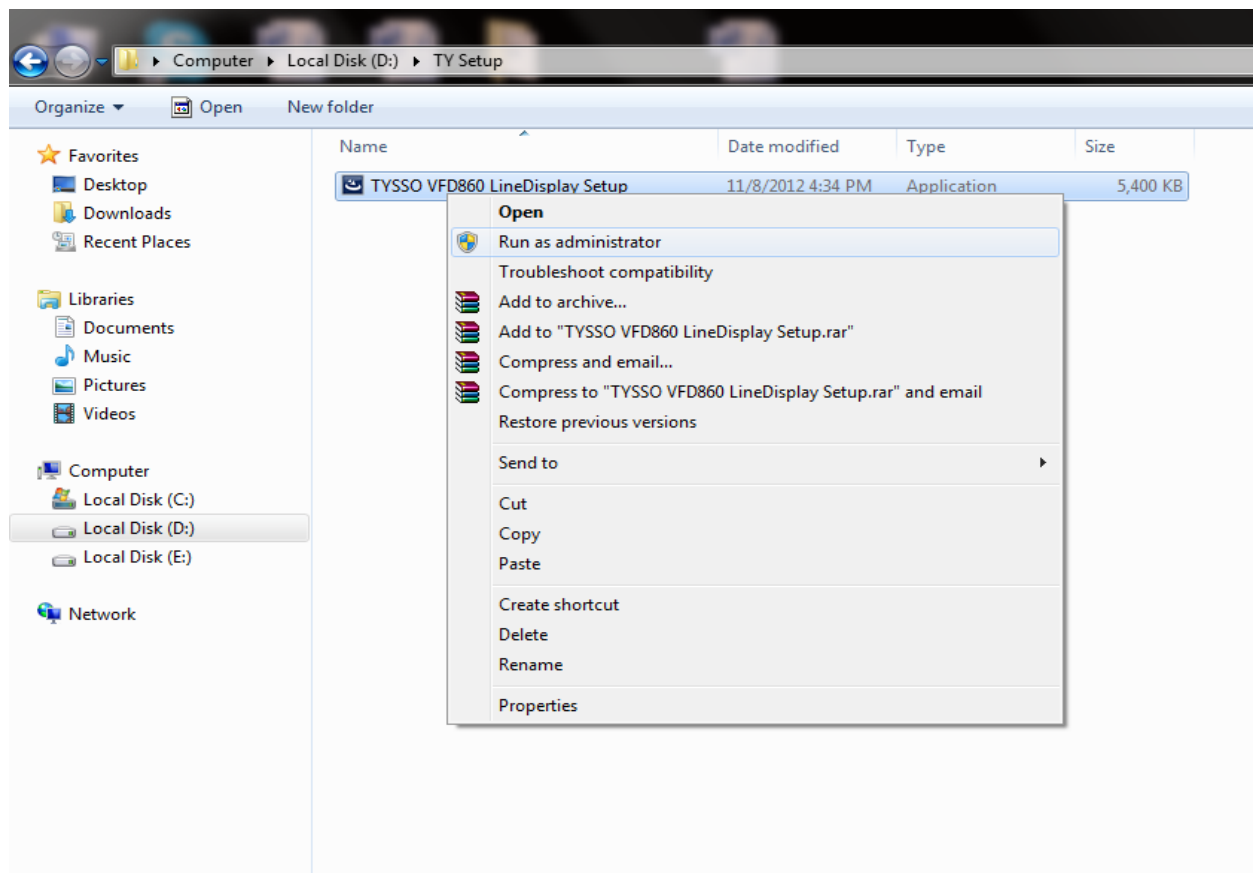
## Installation of TYSSO VFD Line Display Setup

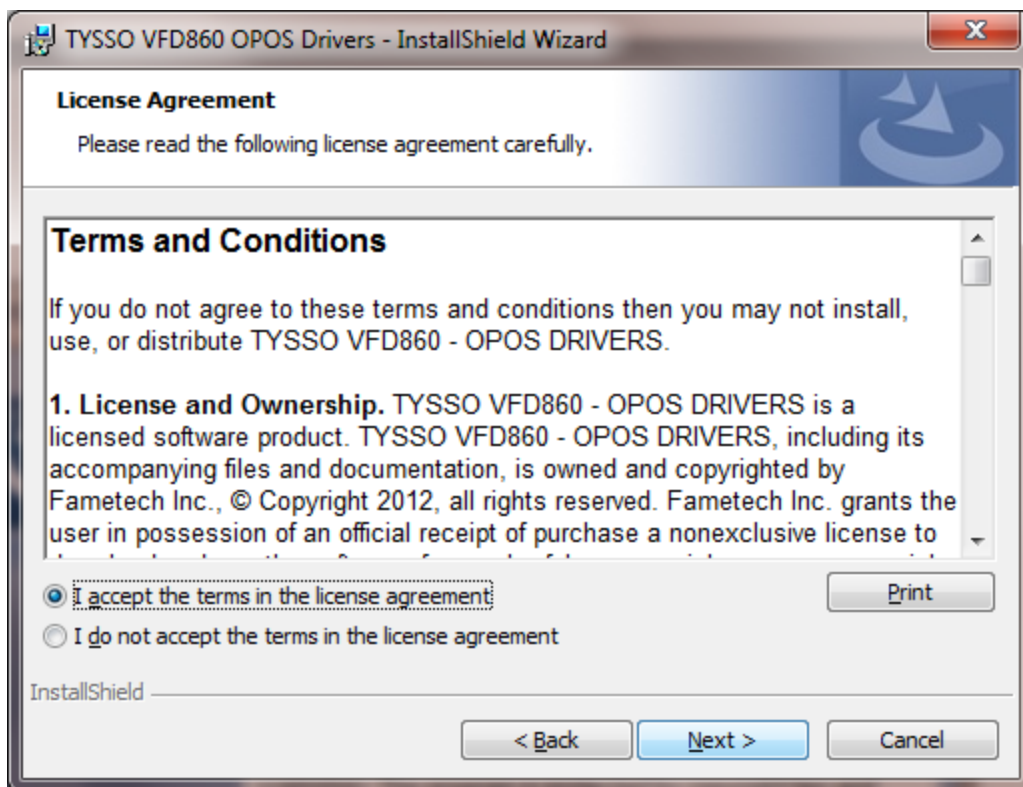
The setup has been created using Install Shield. So, by just double clicking the setup it'll execute and place the files to specified location.

Destination folder for setup installation is "**C: \Program Files\Fametech Inc.\VFD860\**"

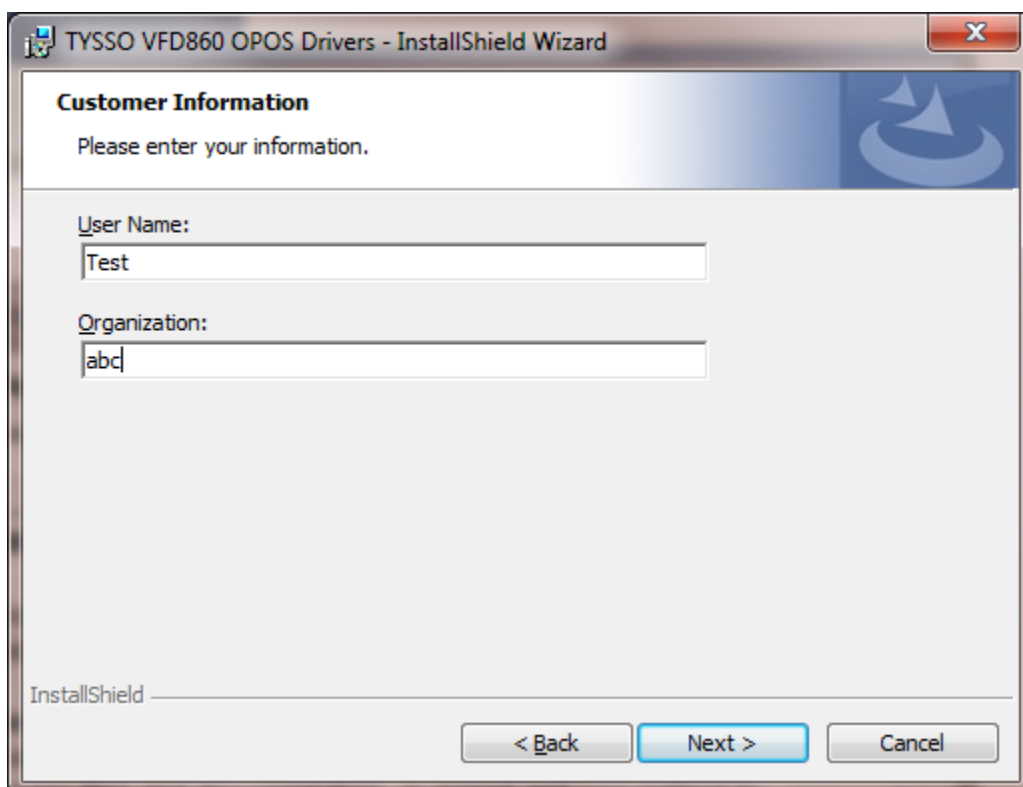
It'll automatically register and remove the temporary files during running of TYSSO setup.

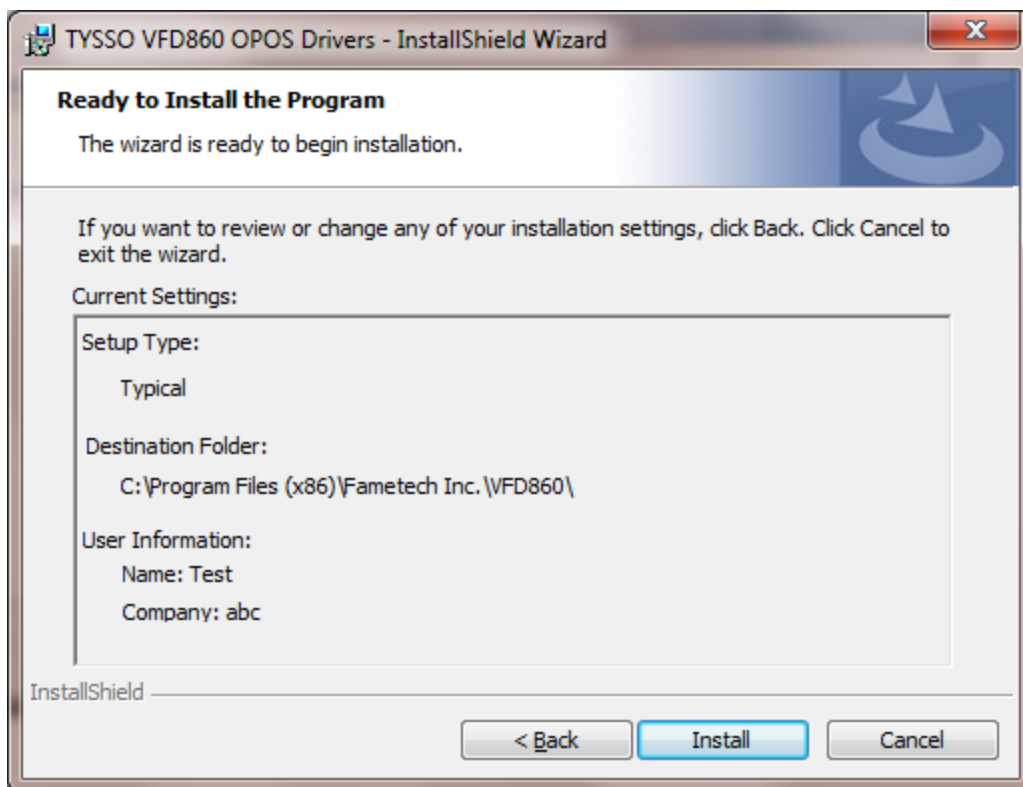
In case of windows 7 and Vista always use "**Run as Administrator**" option while installing the TYSSO VFD860 Line Display Driver Setup.



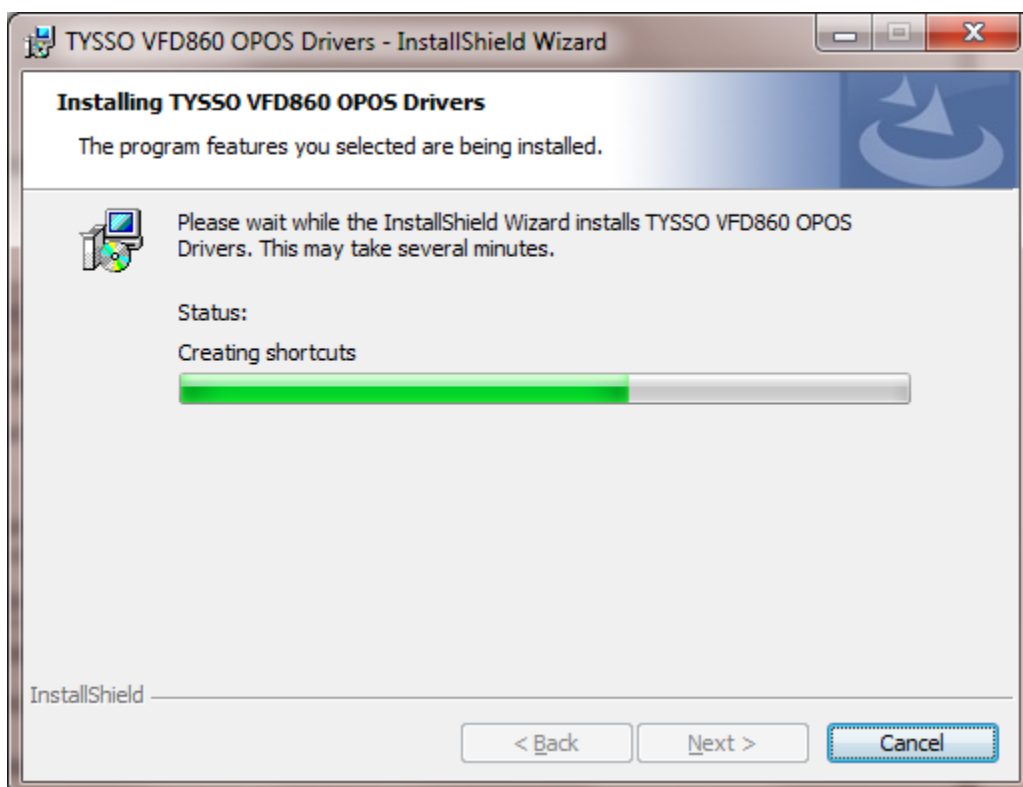


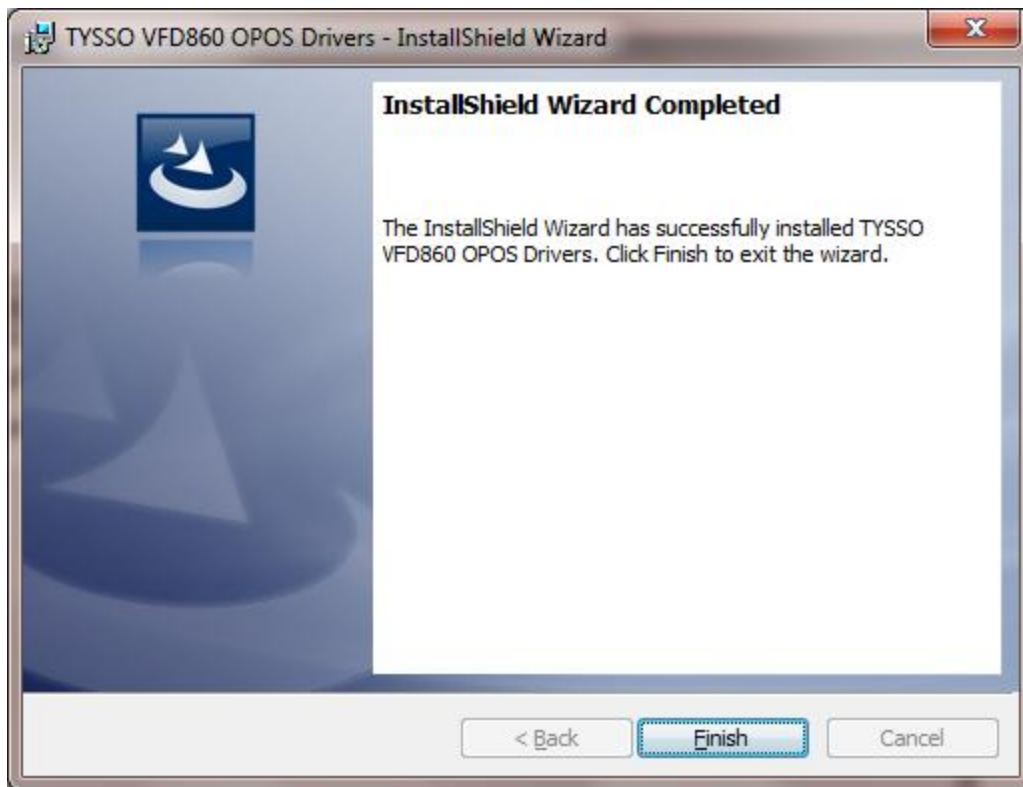
Accept the Terms and Conditions in the license agreement and click on the next button.





Here a dialog will show the current setting for the setup. Click on Install button to continue the installation.





## Usage of TYSSO VFD Line Display Utility

Go to Start Menu, All Programs and click on Fametech Inc. -> TYSSO VFD860 OPOS Drivers

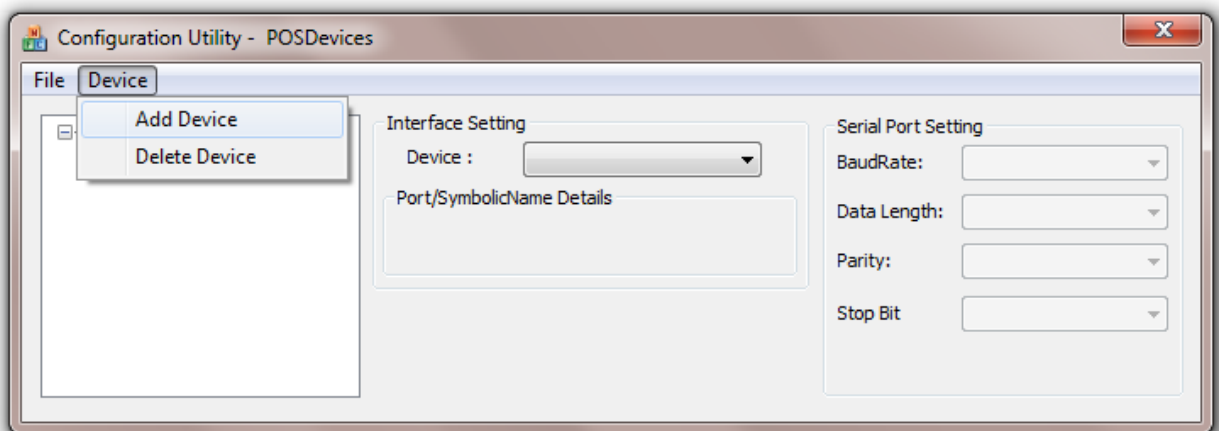
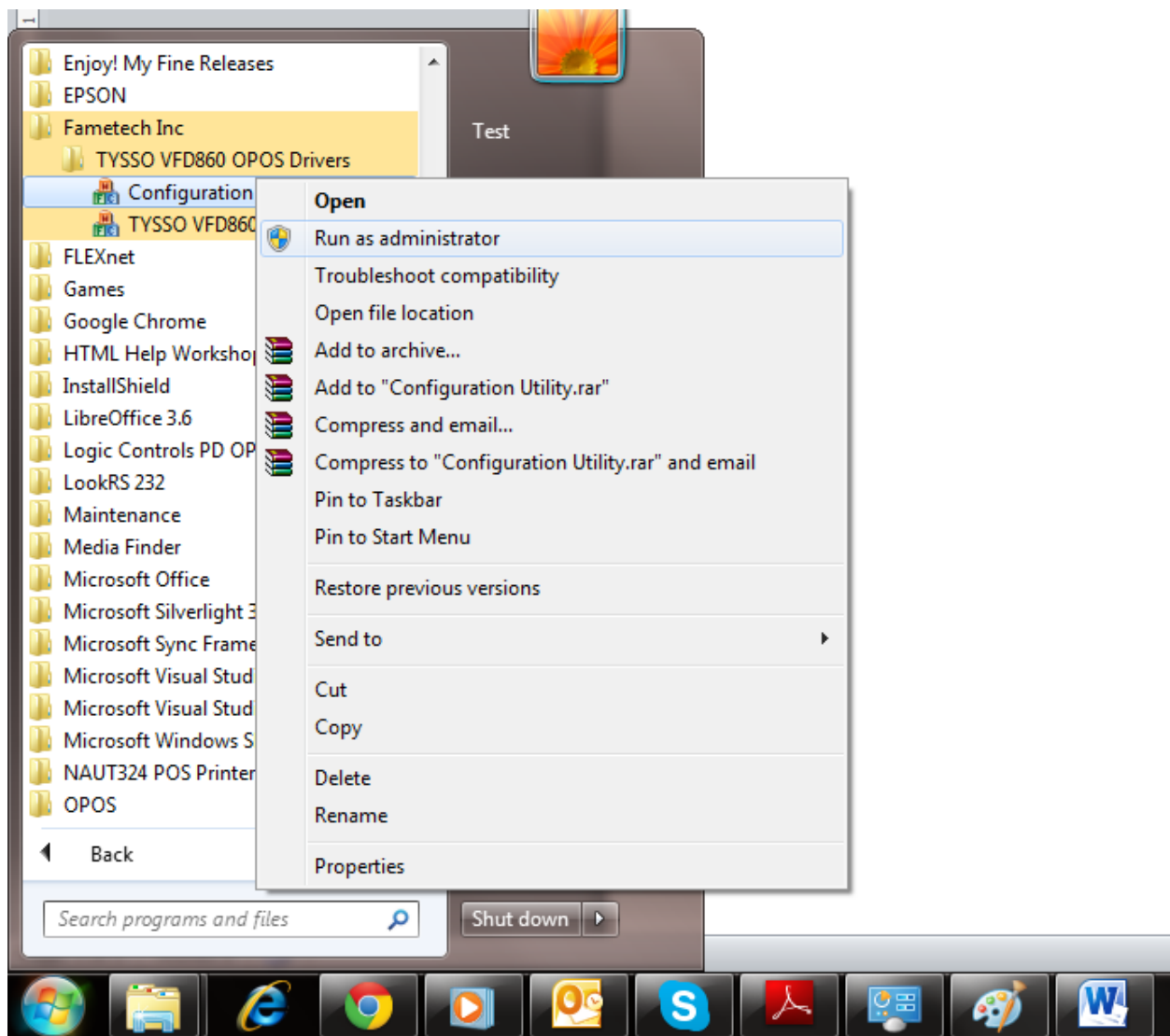
Here we see two utilities has been added i.e.

- 1) Configuration Utility**
- 2) TYSSO VFD860 Test Utility**

Now, run the configuration Utility.

Always select the "Run as administrator" option by right clicking the application in case of windows 7 and Vista.

This is used to add or delete the device (In our case VFD Display device). All these options can be found in Device menu. These configuration settings can be edited too. .Current Settings will be saved automatically.



Select Port

Select Port: ☐ USB ☒ COM

< Back Next > Cancel Help

Add new Device

Device model: VFD860

Serial Port Setting

Port: COM1

BaudRate: 9600

Data Length: 8

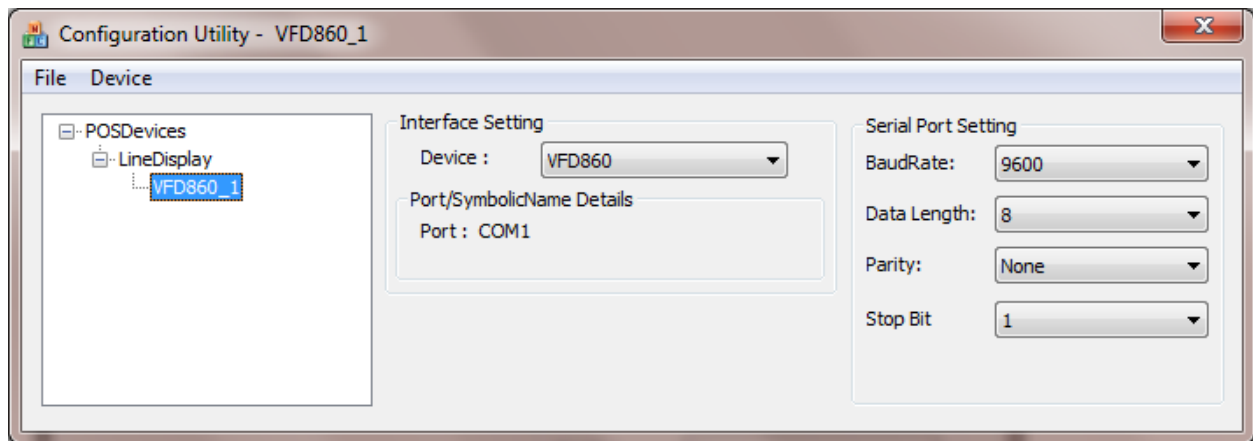
Parity: None

Stop Bit: 1

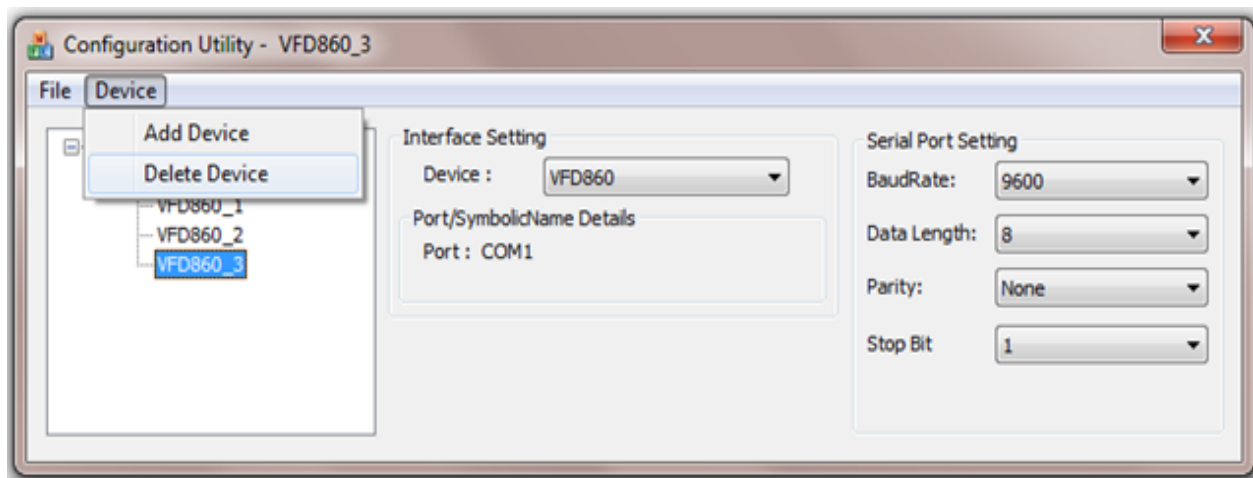
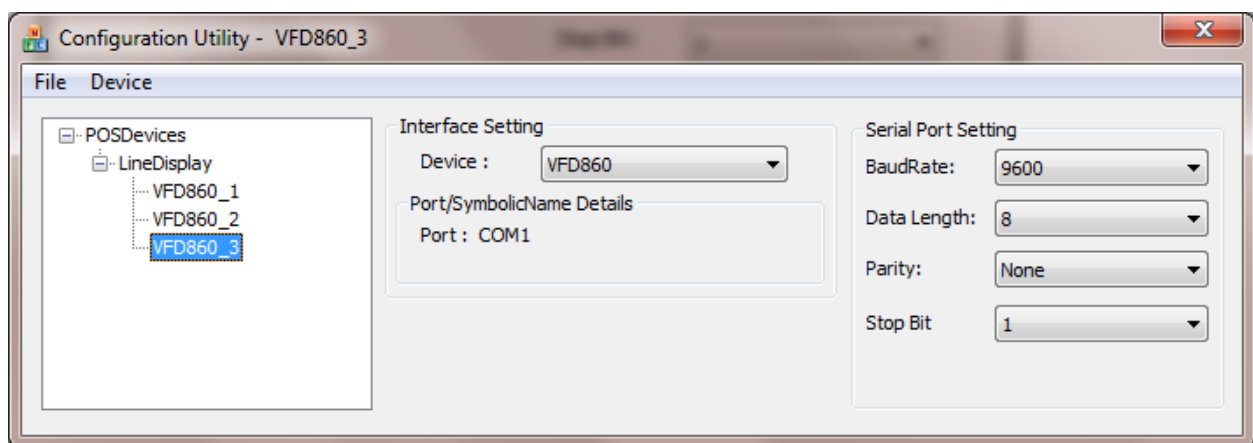
Set to Default

< Back Finish Cancel Help



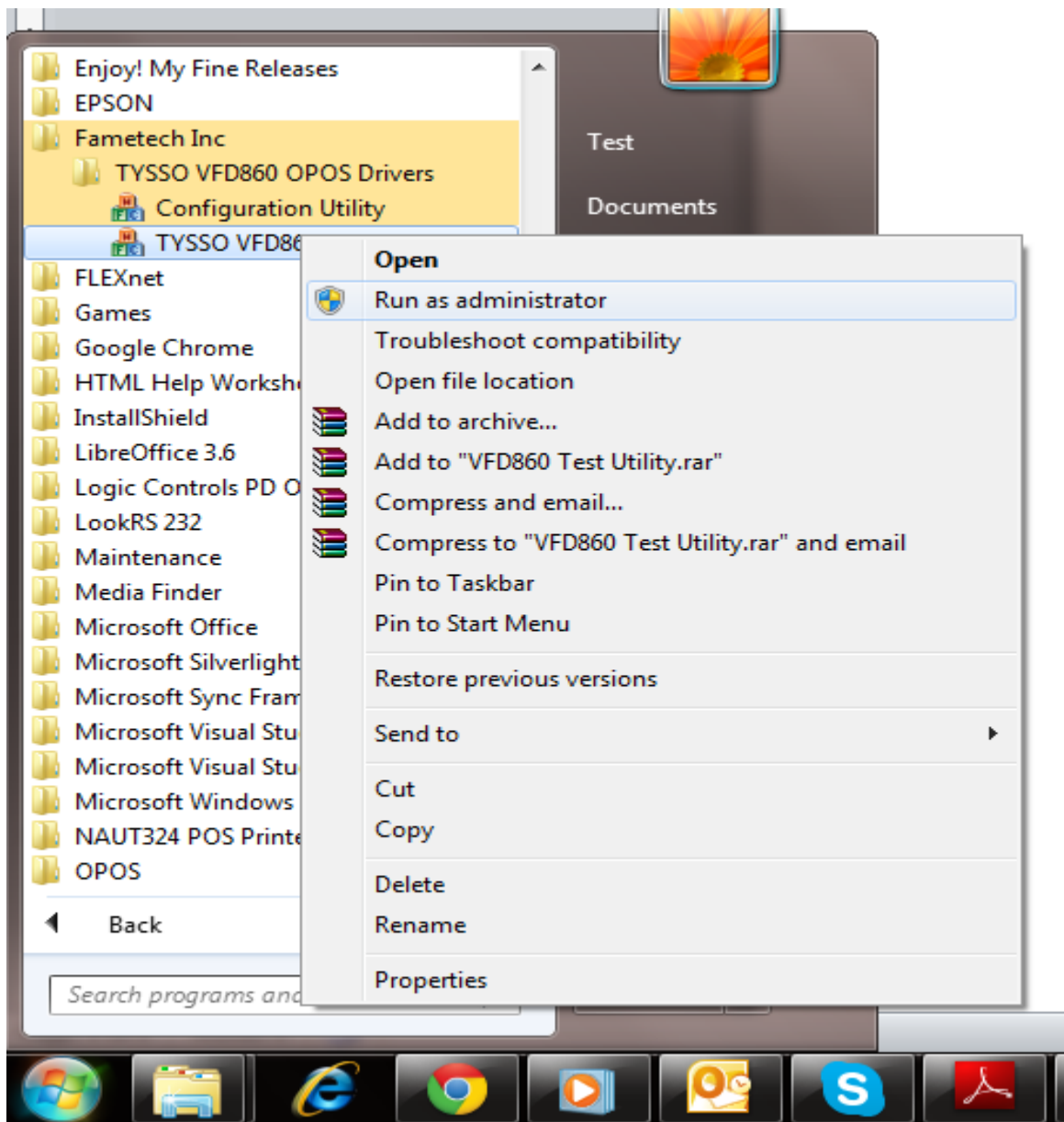


Similarly user can add a number of devices by repeating the above steps.



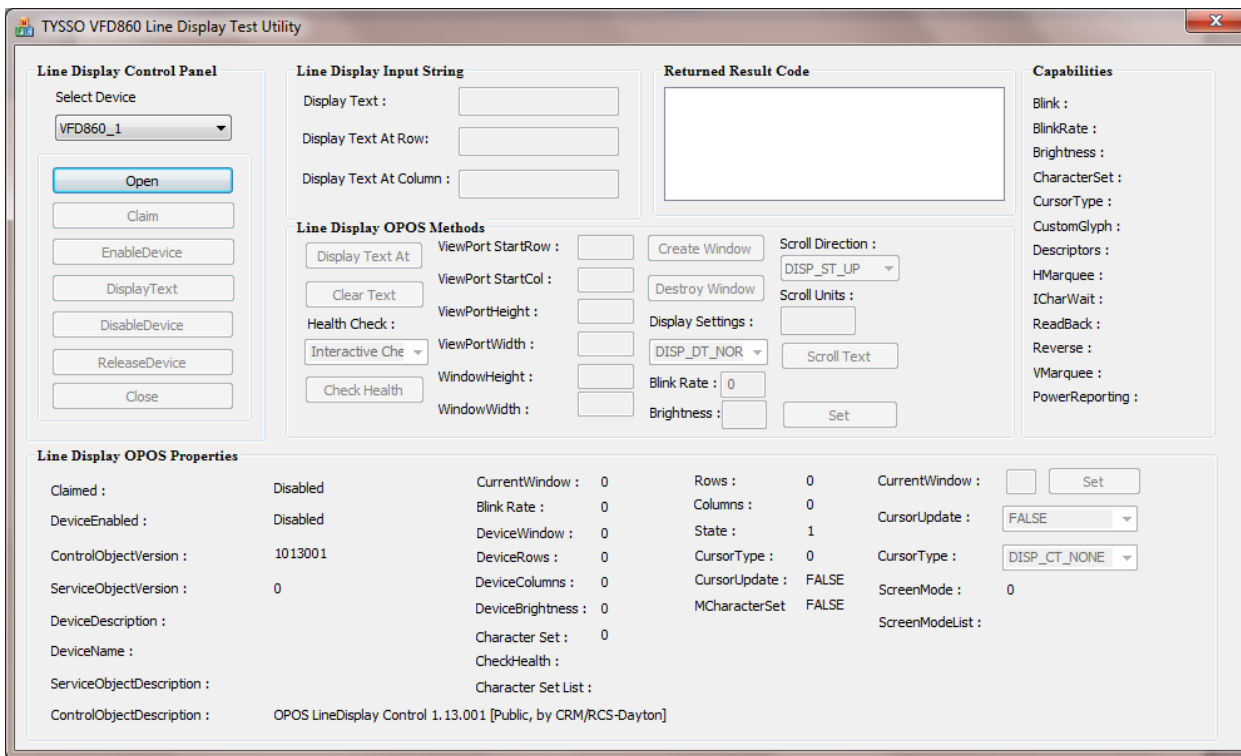
To delete the device Select the device and click on delete device option under the Device menu.

Now run the TYSSO VFD860 Test Utility using “**Run as Administrator**” option.



This will display a new dialog box with list of all the supported methods, capabilities and properties according to OPOS 1.13 version.

Now select the device to communicate according to requirement from the drop down menu. To run this utility follow the OPOS standard and press the Open -> Claim -> Enable Device. If everything remains successful for these refer the status messages (**Returned Result Code**) Display Text will be enabled with corresponding features.



Here is the list of supported **Methods, Properties and Capabilities** by TYSSO VFD860 Line Display.

Sr.No	Common Methods	Supported	Status
1	Open	Yes	Done
2	Close	Yes	Done
3	ClaimDevice	Yes	Done
4	ReleaseDevice	Yes	Done
5	CheckHealth	Yes	Done
6	CompareFirmwareVersion	No	
7	ResetStatistics	No	
8	RetrieveStatistics	No	
9	UpdateFirmware	No	
10	UpdateStatistics	No	
11	DirectIO		

Sr.No	Specific Methods	Supported	Status
12	DisplayText	Yes	Done
13	DisplayTextAt	Yes	Done
14	DisplayBitmap	No	
15	SetBitmap	No	
16	ClearText	Yes	Done
17	ScrollText	Yes	Done
18	SetDescriptor		
19	ClearDescriptors		
20	CreateWindow	Yes	Done
21	DestroyWindow	Yes	Done
22	RefreshWindow		
23	ReadCharacterAtCursor	No	
24	DefineGlyph		

### VFD Line Display - OPOS Driver supported Properties

Sr.No	Common Property	Supported	Status
1	AutoDisable	No	
2	CheckHealthText	Yes	Done
3	Claimed	Yes	Done
4	DataCount	No	
5	DataEventEnabled	No	
6	DeviceEnabled	Yes	Done
7	FreezeEvents		
8	OutputID	No	
9	PowerNotify		
10	PowerState		

11	State	Yes	Done
12	DeviceControlDescription	Yes	Done
13	DeviceControlVersion	Yes	Done
14	DeviceServiceDiscription	Yes	Done
15	DeviceServiceVersion	Yes	Done
16	PhysicalDeviceDiscription	Yes	Done
17	PhysicalDeviceName	Yes	Done

Sr.No	Specific Property	Supported	Status
18	BlinkRate	Yes	Done
19	DeviceWindows	Yes	Done
20	DeviceRows	Yes	Done
21	DeviceColumns	Yes	Done
22	DeviceDescriptors	Yes	Done
23	DeviceBrightness	Yes	Done
24	CharacterSet	Yes	Done
25	CharacterSetList	Yes	Done
26	CurrentWindow	Yes	Done
27	Rows	Yes	Done
28	Columns	Yes	Done
29	CursorRow	No	
30	CursorColumn	No	
31	CursorType	Yes	Done
32	CursorUpdate	Yes	Done
33	MarqueeType	No	
34	MarqueeFormat	No	
35	MarqueeUnitWait	No	
36	MaximumX	No	
37	MaximumY	No	
38	MarqueeRepeatWait	No	
39	InterCharacterWait		
40	MapCharacterSet	Yes	Done
41	CustomGlyphList		
42	GlyphHeight		
43	GlyphWidth		
44	ScreenMode	Yes	Done
45	ScreenModeList	Yes	Done

## VFD Line Display - OPOS Driver supported Capabilities

Sr.No	Common capabilities	Supported	Status
1	CapCompareFirmwareVersion	No	
2	CapStatisticsReporting	No	
3	CapUpdateFirmware	No	
4	CapUpdateStatistics	No	
5	CapPowerReporting	No	
Sr.No	Specific capabilities	Supported	Status
6	CapBitmap	No	
7	CapBlink	Yes	Done
8	CapBlinkRate	Yes	Done
9	CapBrightness	Yes	Done
10	CapCharacterSet	Yes	Done
11	CapCursorType	Yes	Done
12	CapCustomGlyph	No	
13	CapDescriptors	No	
14	CapHMarquee	No	
15	CapICharWait	No	
16	CapMapCharacterSet	Yes	Done
17	CapReadBack	No	Done
18	CapReverse 1.6 Long R Open	Yes	Done
19	CapScreenMode	Yes	Done
20	CapVMarquee	No	